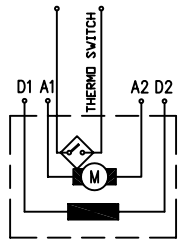
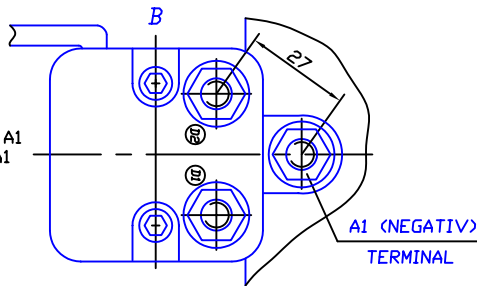


Rotation (viewed from drive end)
 CCW: Connect A2 to D2, '+' to D1 and '-' to A1
 CW: Connect A2 to D1, '+' to D2 and '-' to A1



CODE	V	kW	RPM	Rate	Rot	IP	Curve
------	---	----	-----	------	-----	----	-------

MS112 2.2/55 1200	12	2,2	5500	S2-3min	REV	IP44	fig.4
-------------------	----	-----	------	---------	-----	------	-------

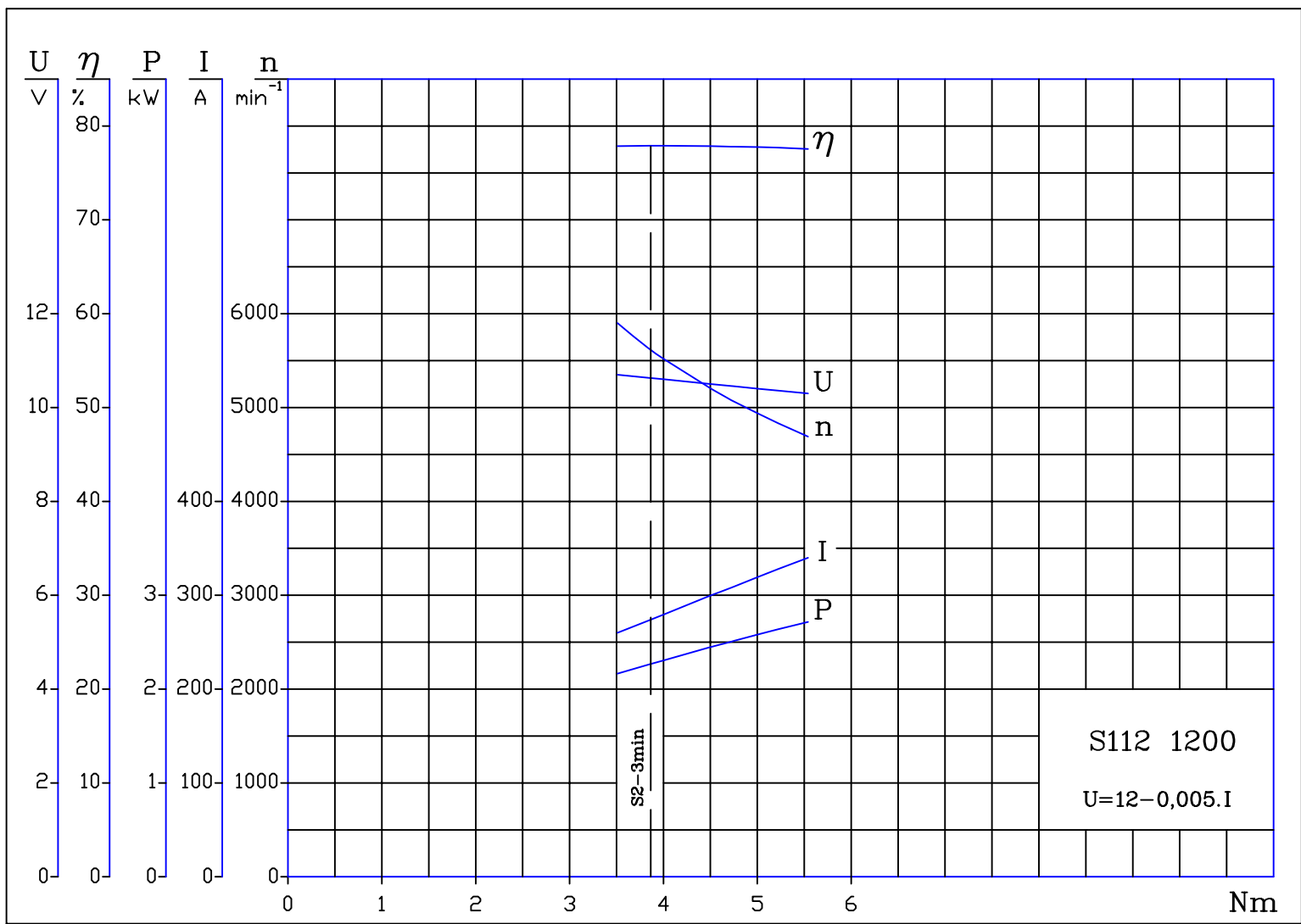
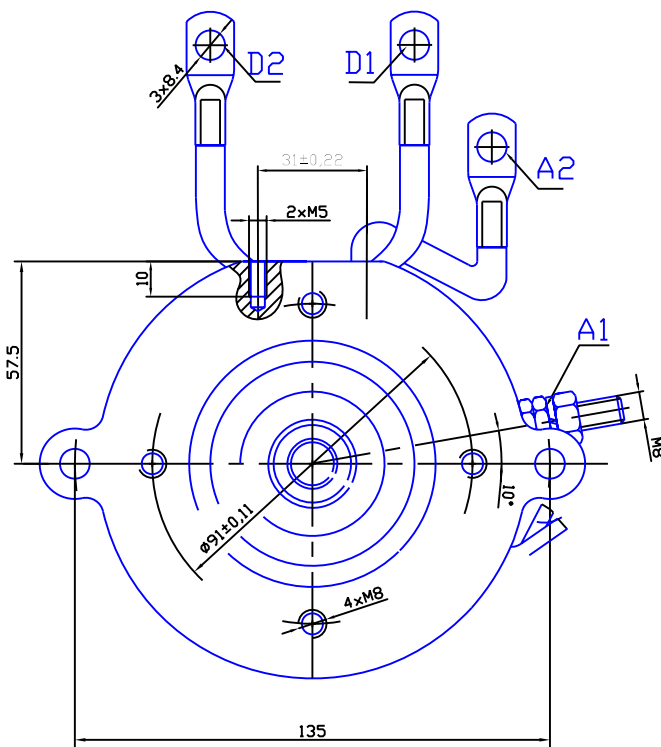
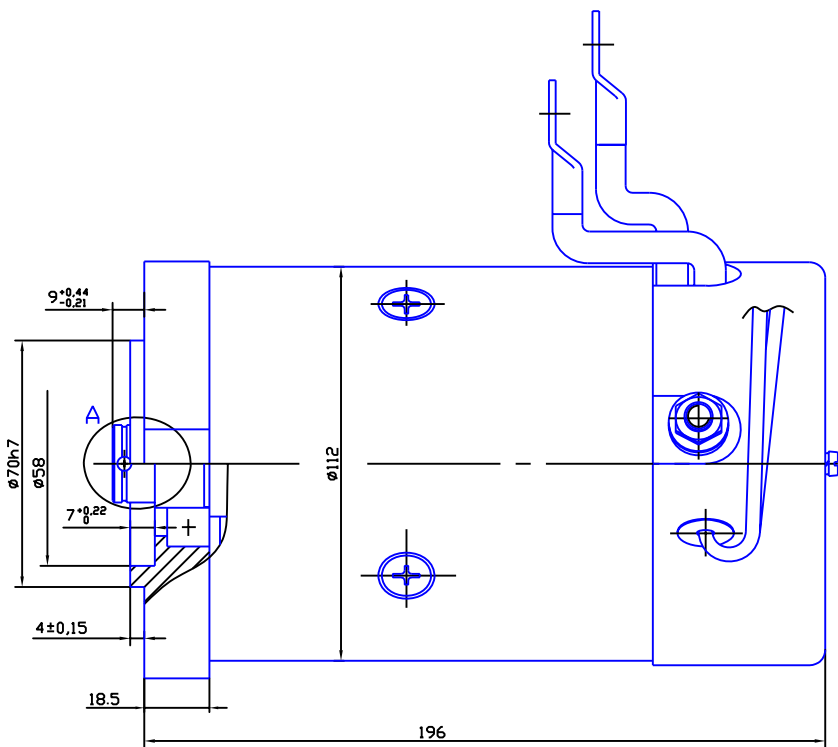
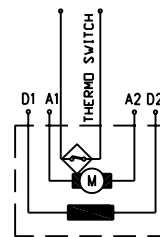
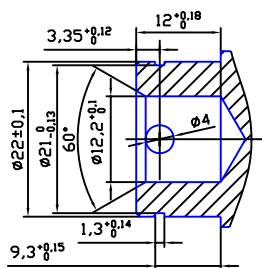


fig.4



A(2:1)



CODE	V	kW	RPM	Rate	Rot	IP	Curve
MS112 1,6/44 1202	12	1,6	4400	S2-4min	REV	IP44	fig.1
MS112 2,2/50 1202	12	2,2	5000	S2-3min	REV	IP44	fig.2

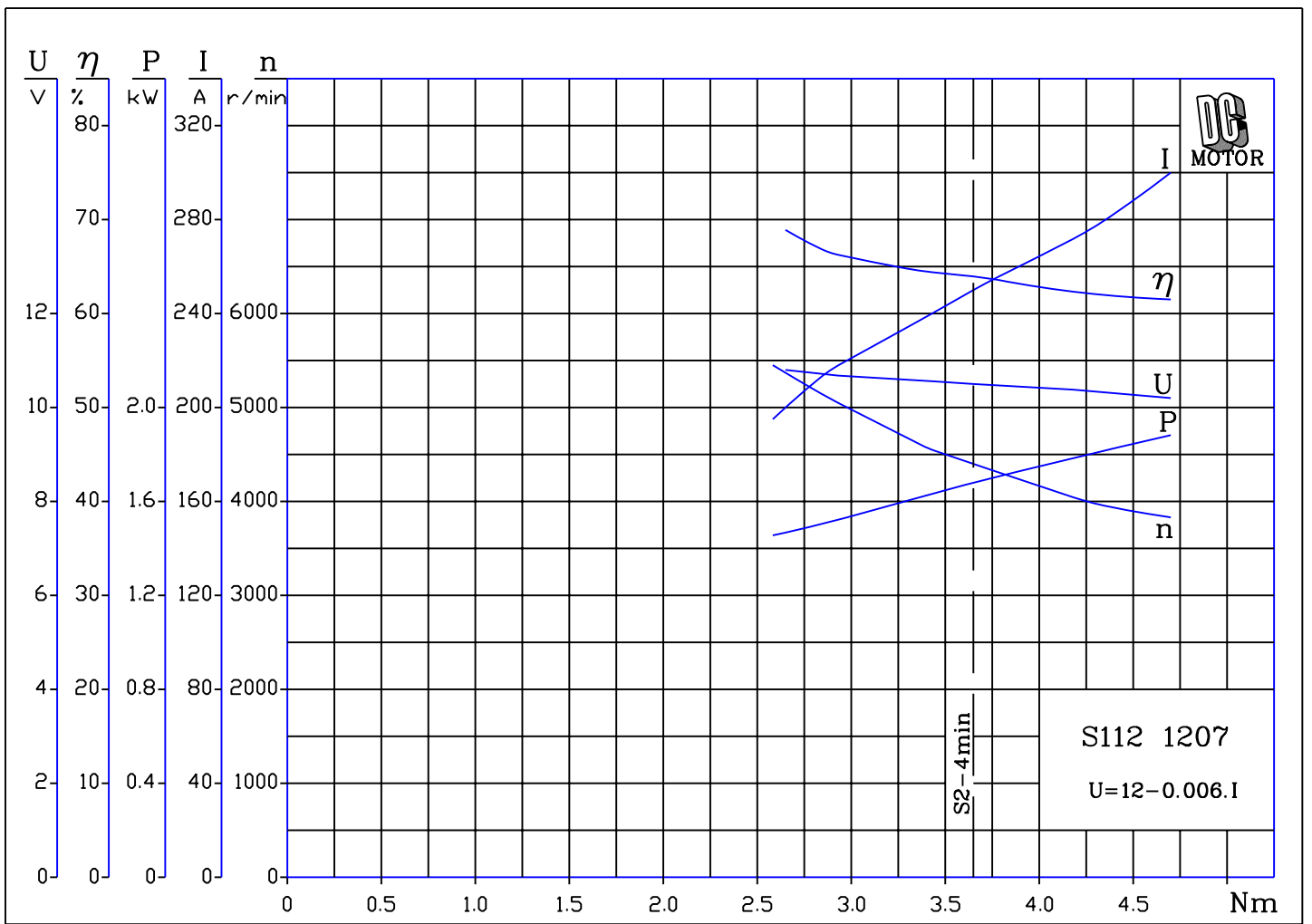


fig.1

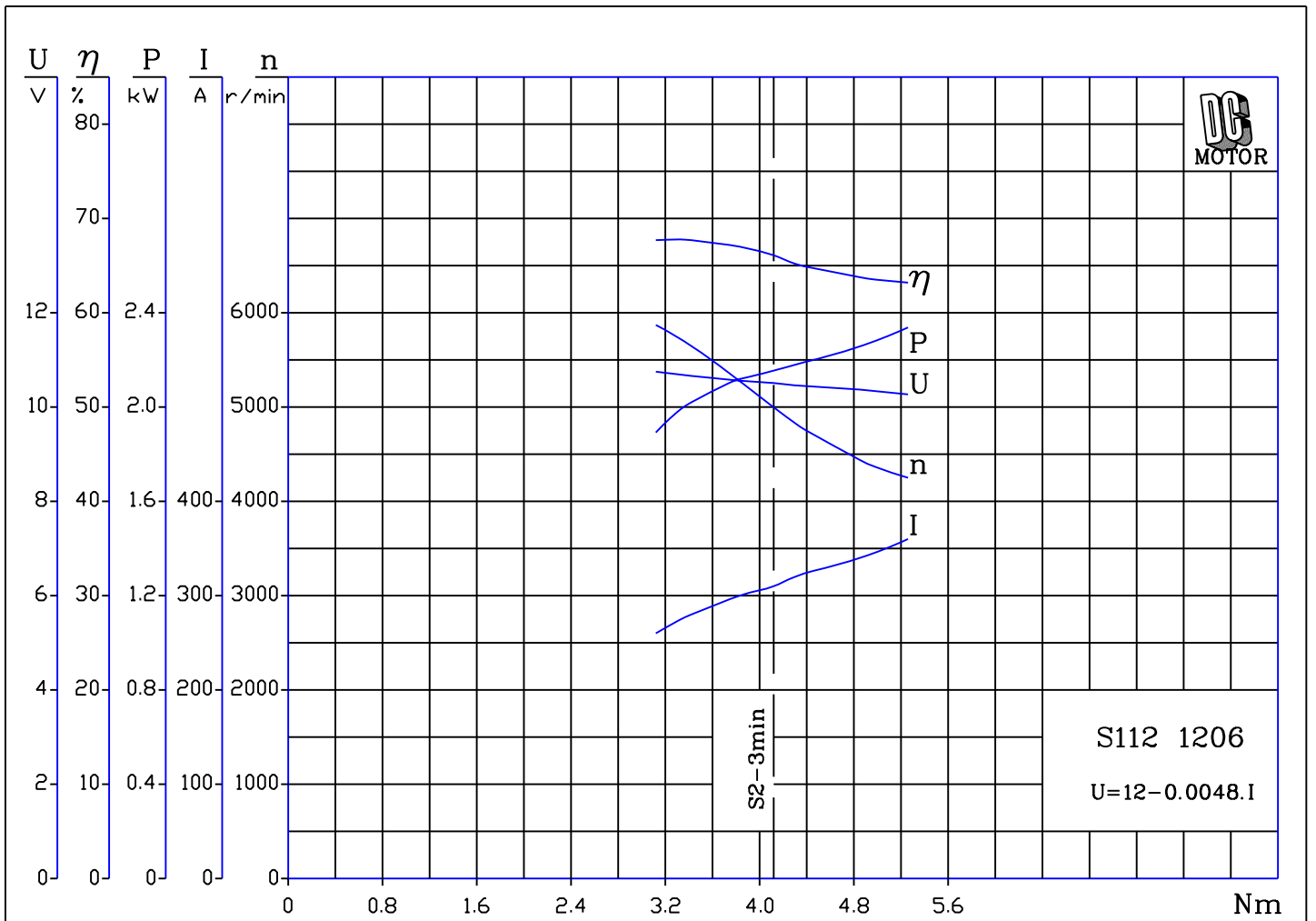
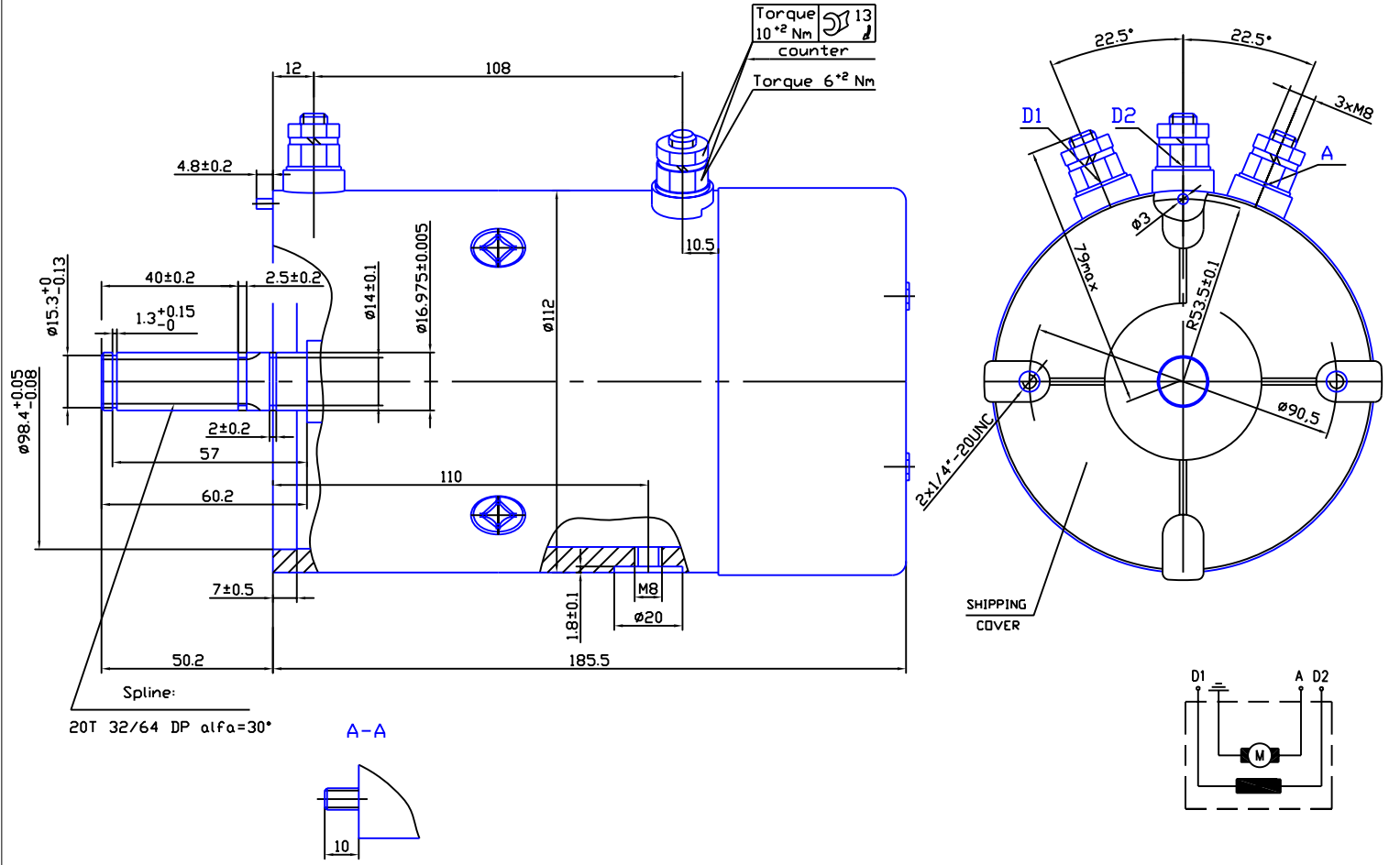


fig.2



CODE	V	kW	RPM	Rate	Rot	IP	Curve
MS112 2,1/28 1204	12	2,1	2800	S2-1,5min	REV	IP56	fig.1
MS112 2,1/40 1204	12	2,1	4000	S2-3min	REV	IP56	fig.2
MS112 2,1/28 2404	24	2,1	2800	S2-2min	REV	IP56	fig.3
MS112 2,1/40 2404	24	2,1	4000	S2-3,5min	REV	IP56	fig.4

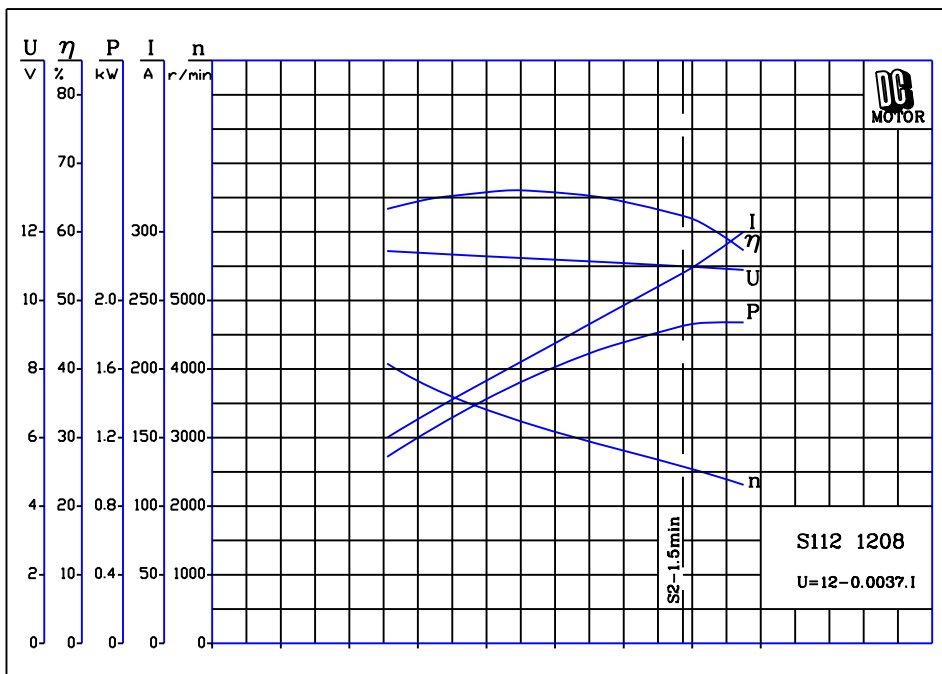


fig.1

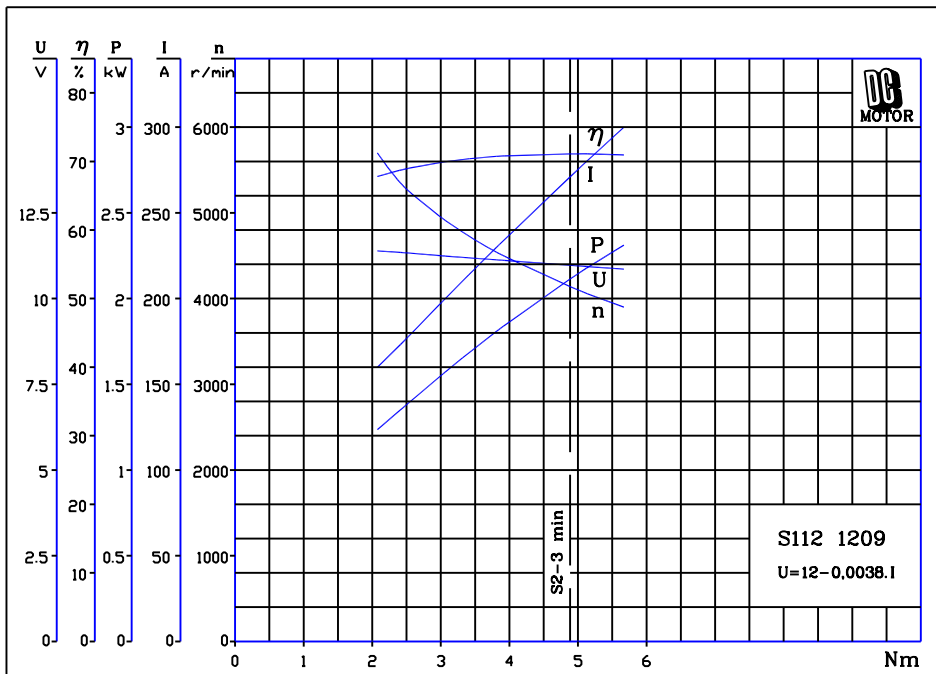


fig.2

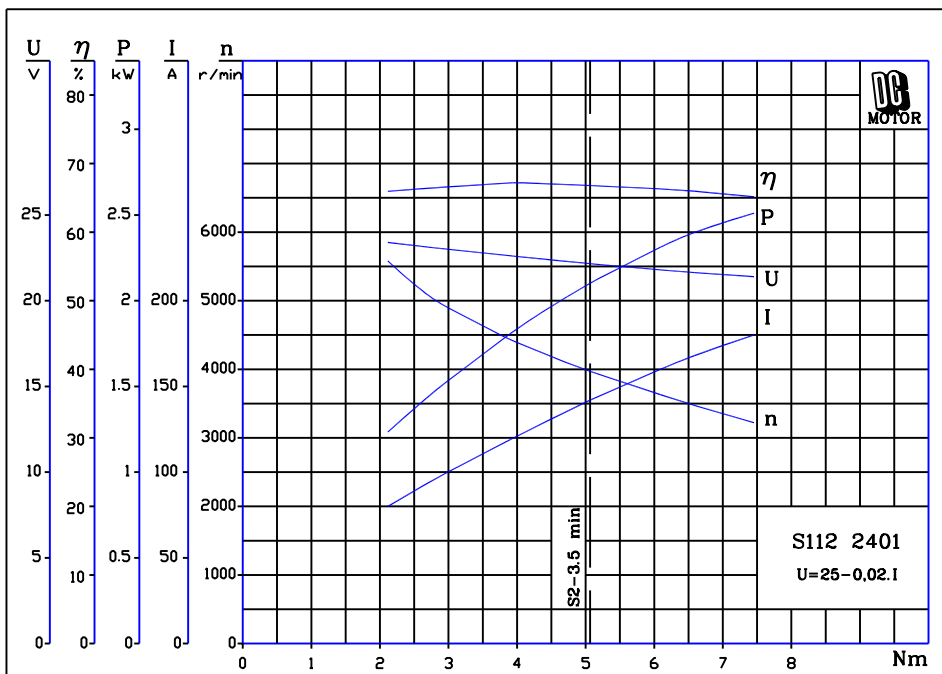
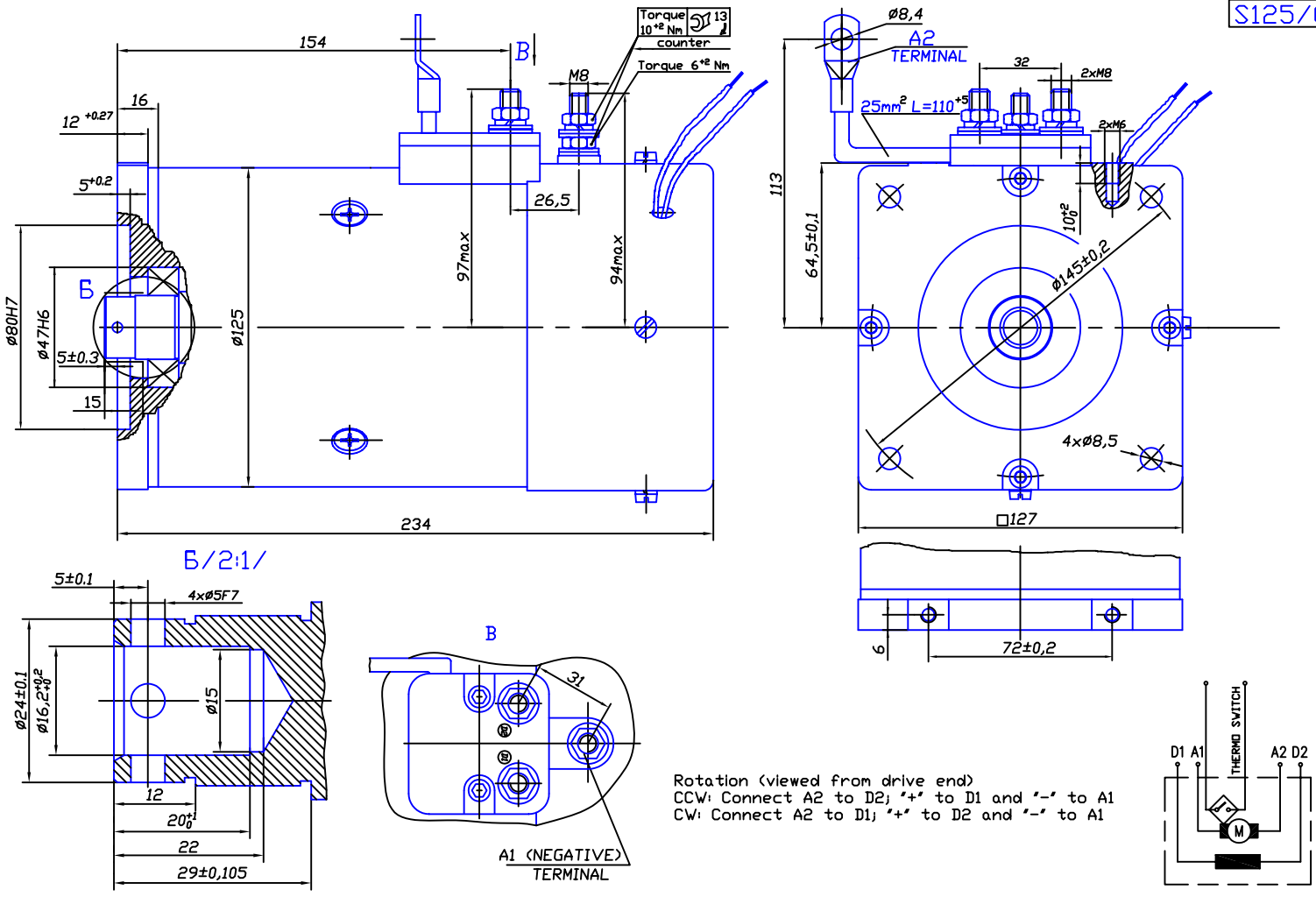


fig.4

S125/00



CODE	V	kW	RPM	Rate	Rot	IP	Curve
MS125 3.0/35 1200	12	3.0	3500	S2-3,5min	REV	IP44	fig.6
MS125 3.0/35 2400	24	3,0	3500	S2-4,5min	REV	IP44	fig.7

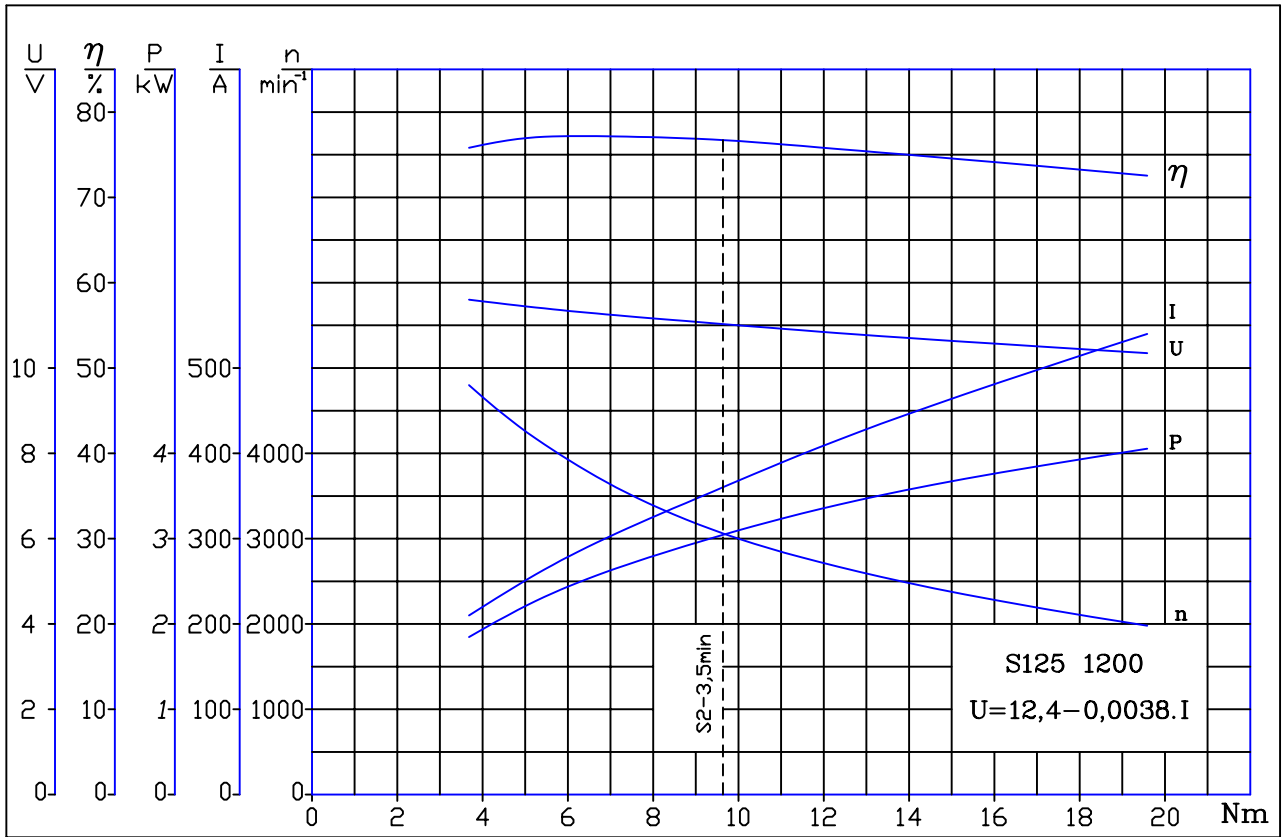


fig.6

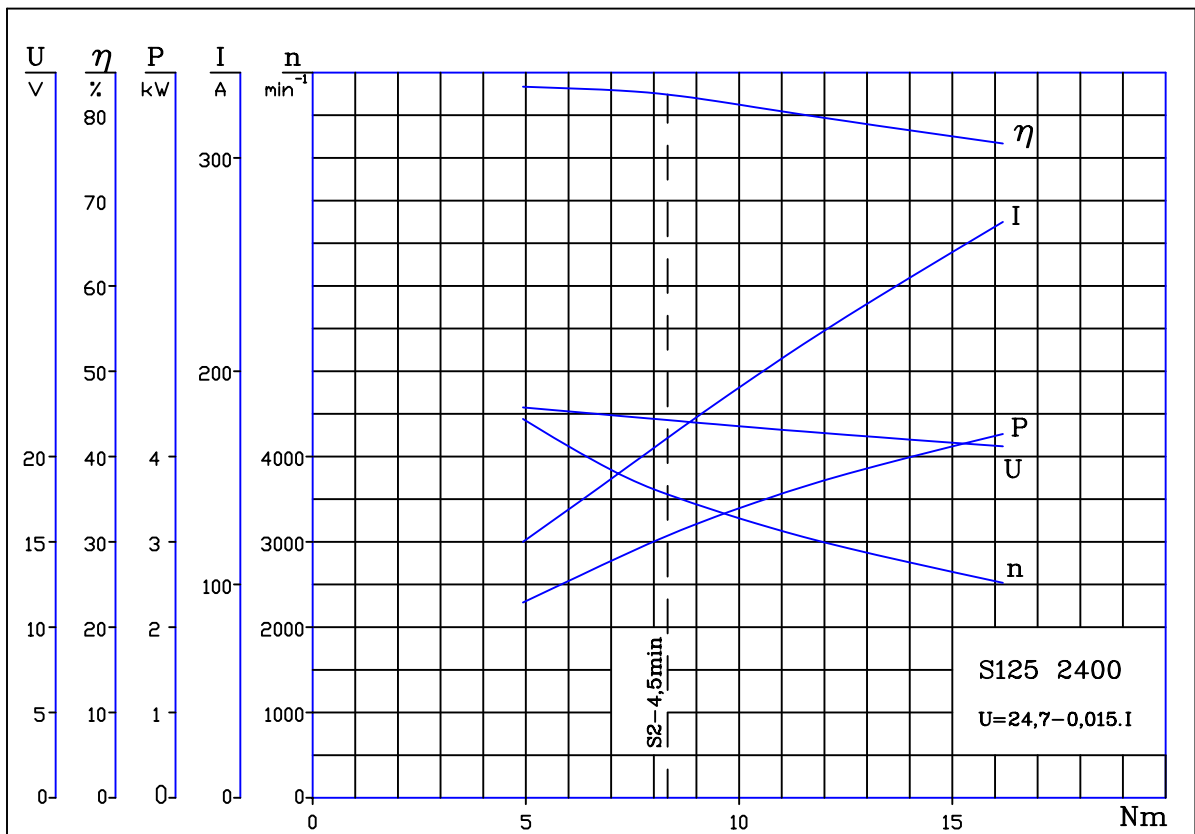
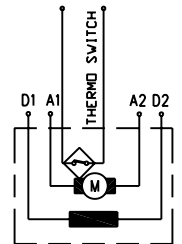
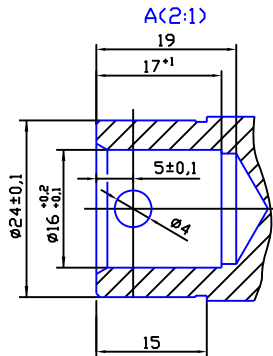
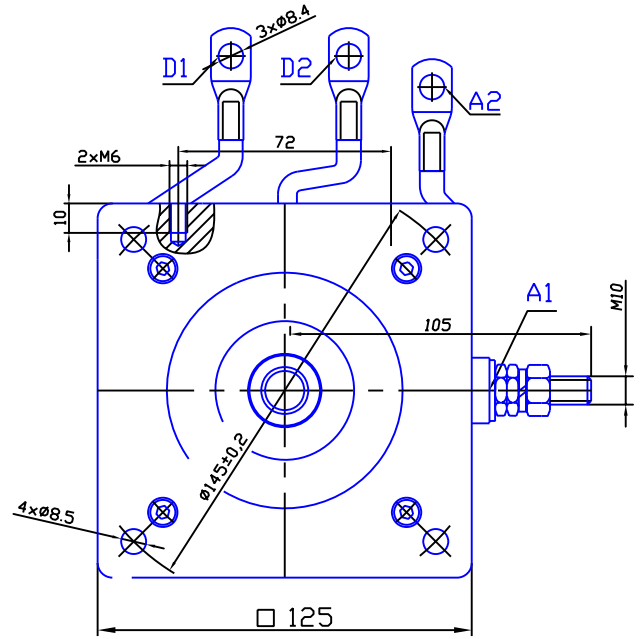
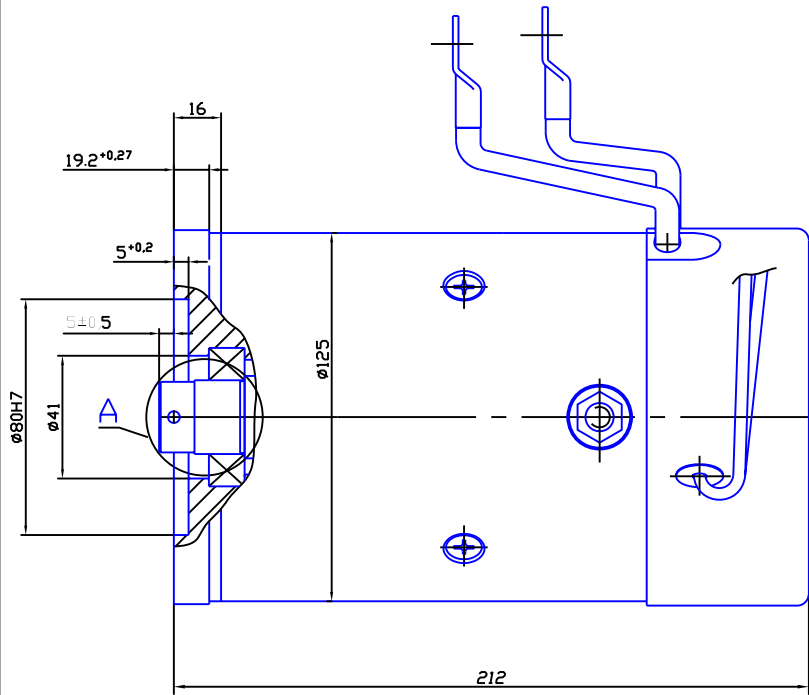


fig.7



CODE	V	kW	RPM	Rate	Rot	IP	Curve
MS125 2,3/45 1201	12	2,3	4500	S2-3min	REV	IP44	fig.1
MS125 2,3/45 2401	24	2,3	4500	S2-5min	REV	IP44	fig.2

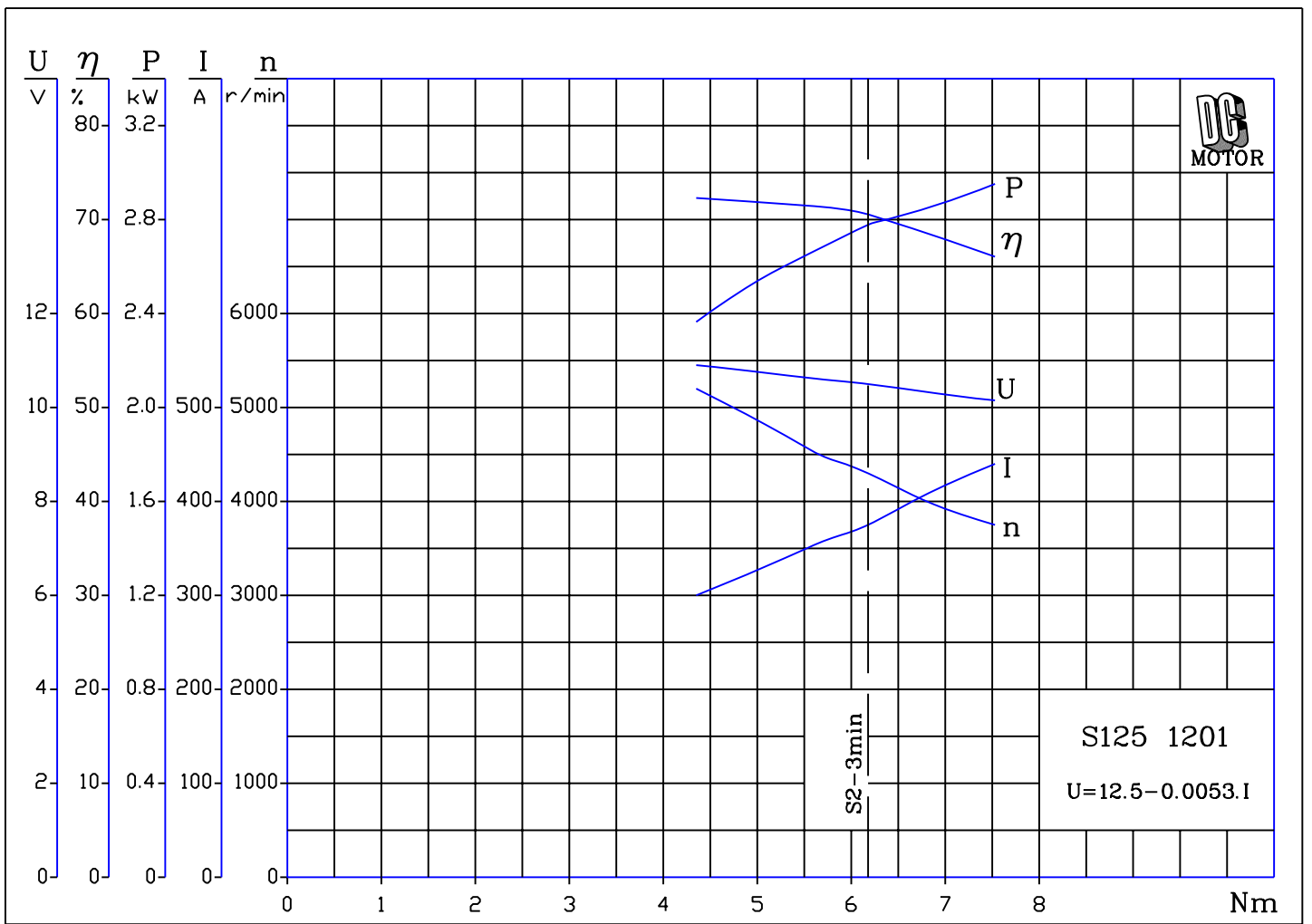


fig.1

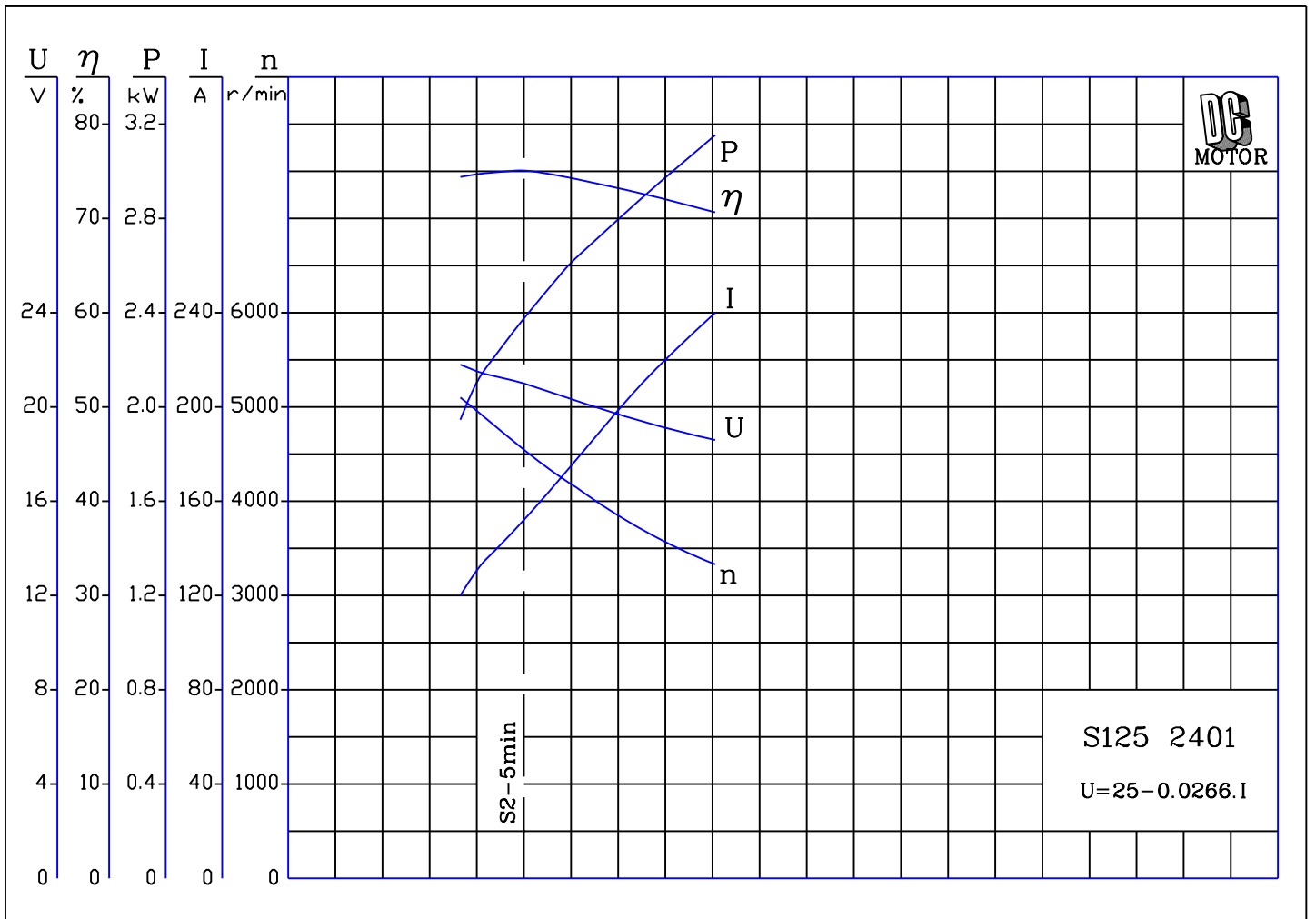
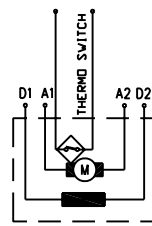
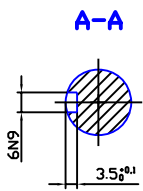
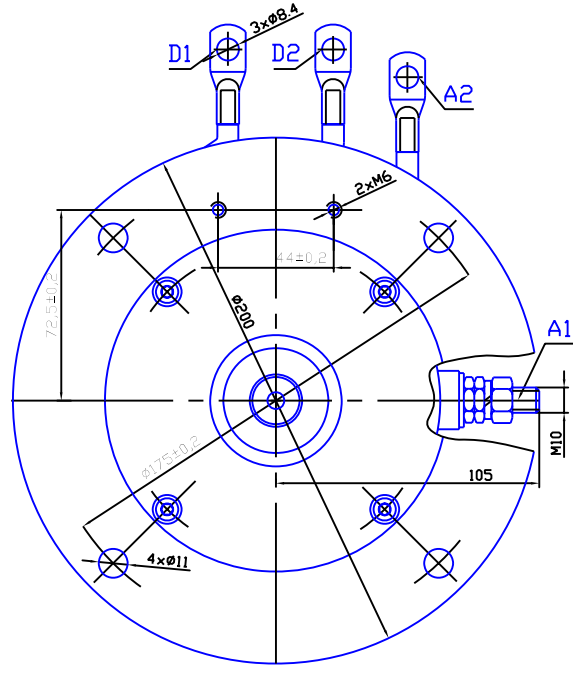
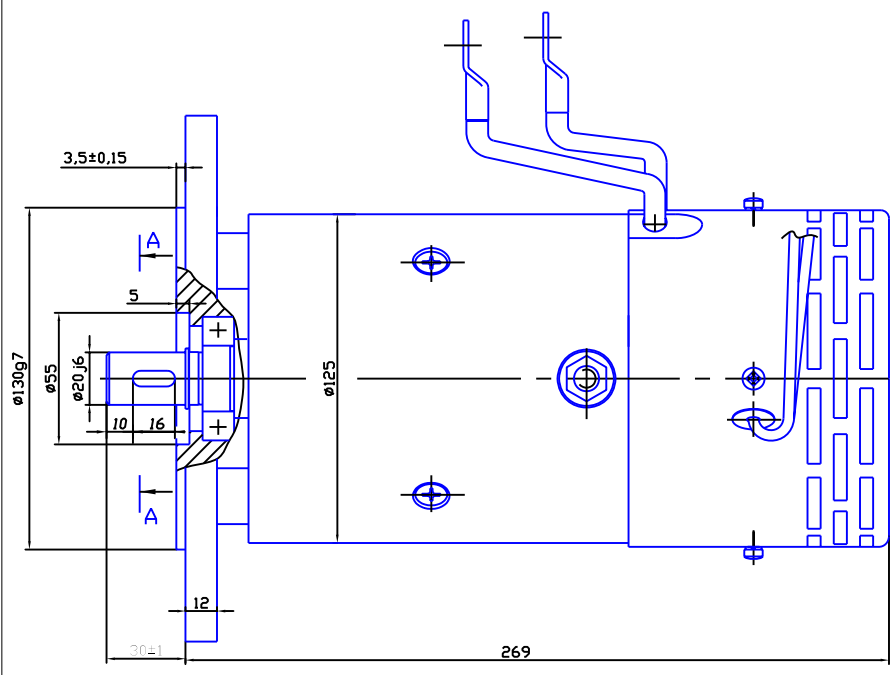


fig.2

SI25/02



CODE	V	kW	RPM	Rate	Rot	IP	Curve
MS125 4,0/32 1202	12	4,0	3200	S2-3min	REV	IP20	fig.1
MS125 4,0/32 2402	24	4,0	3200	S2-3min	REV	IP20	fig.2

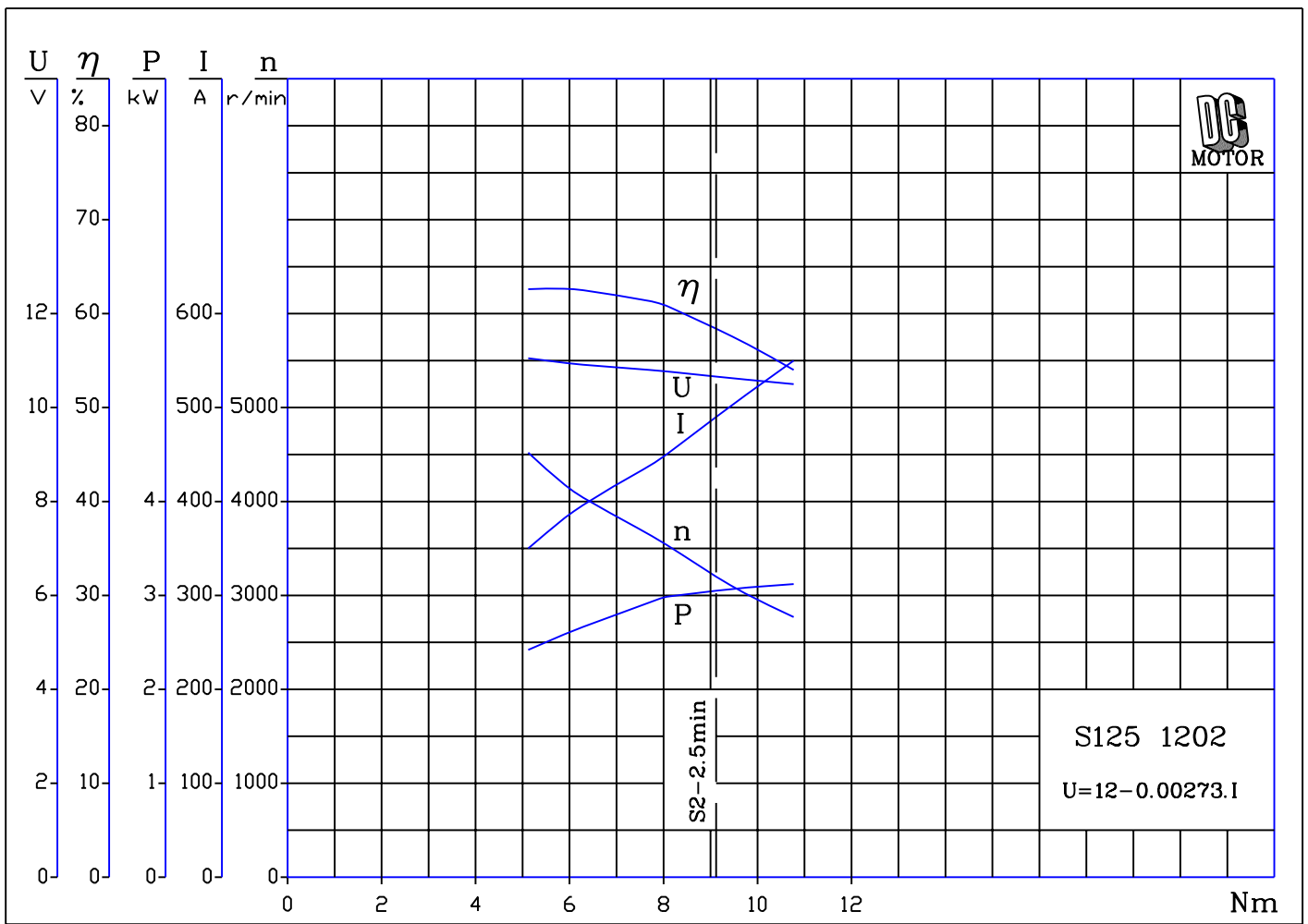


fig.1

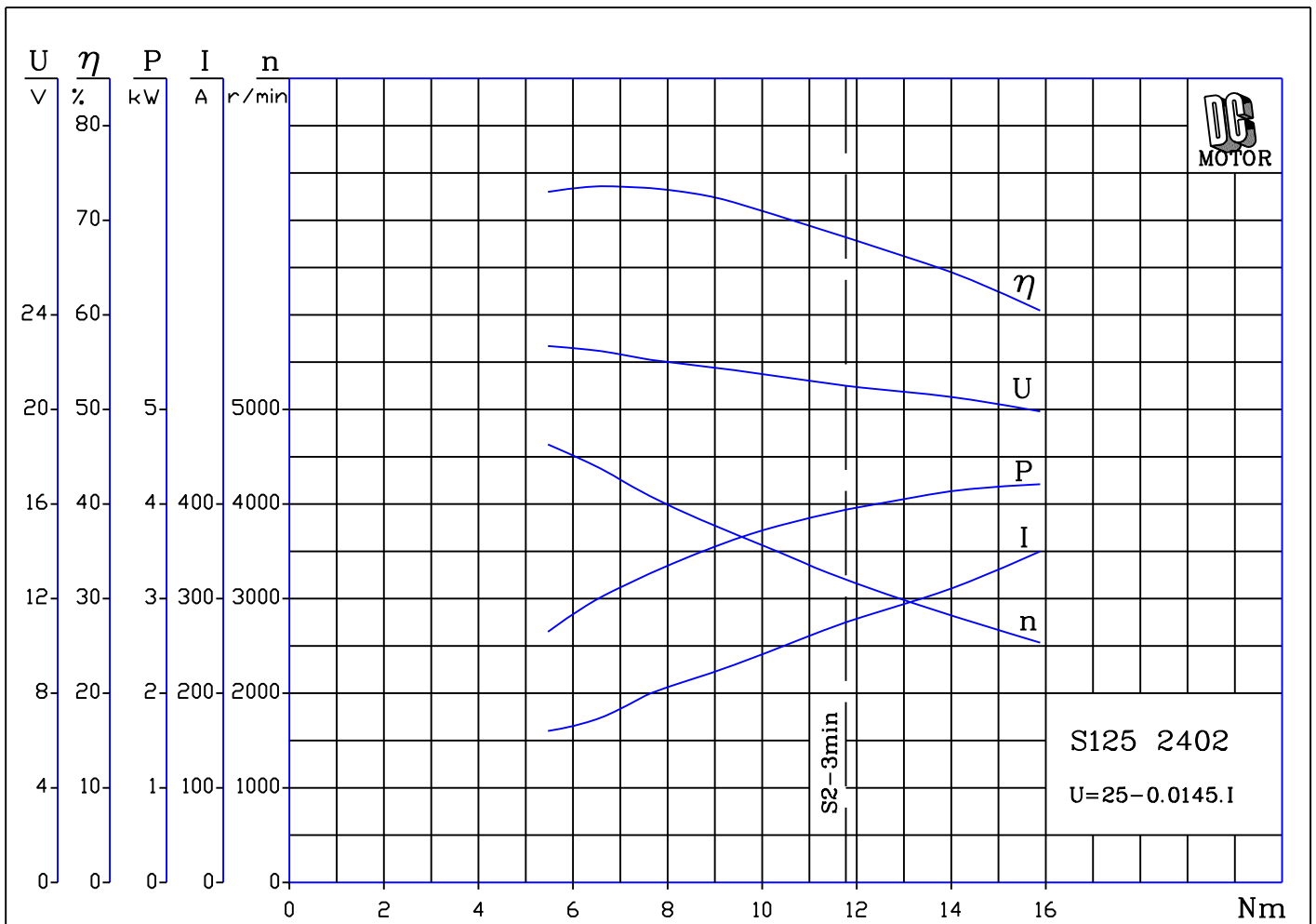
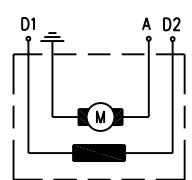
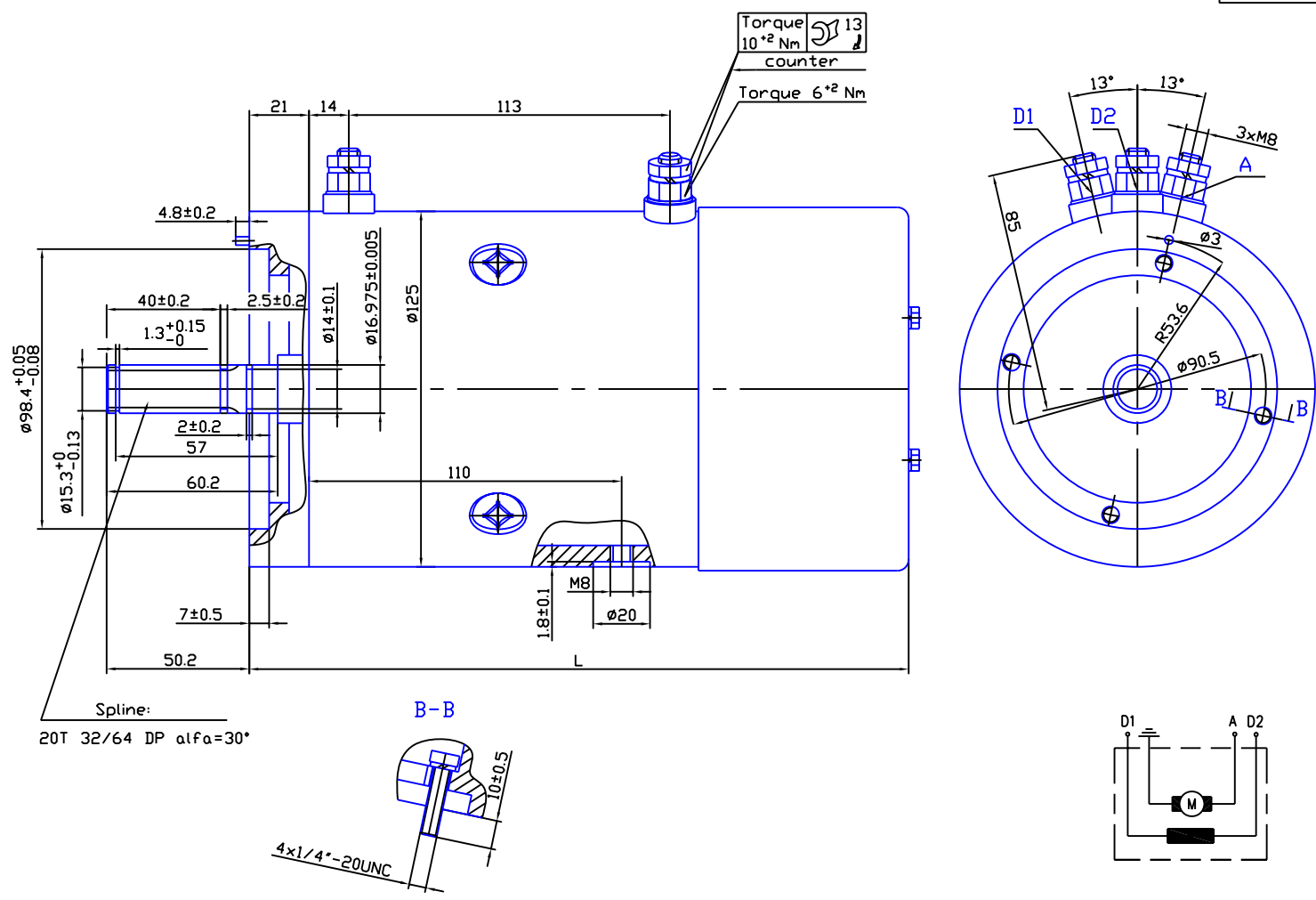


fig.2



CODE	V	kW	RPM	Rate	Rot	IP	Curve
MS125 3,0/28 1204	12	3,0	2800	S2-3,5min	REV	IP56	fig.1
MS125 3,0/40 1204	12	3,0	4000	S2-3,5min	REV	IP56	fig.2
MS125 3,0/28 2404	24	3,0	2800	S2-4,5min	REV	IP56	fig.3
MS125 3,0/40 2404	24	3,0	4000	S2-4,5min	REV	IP56	fig.4

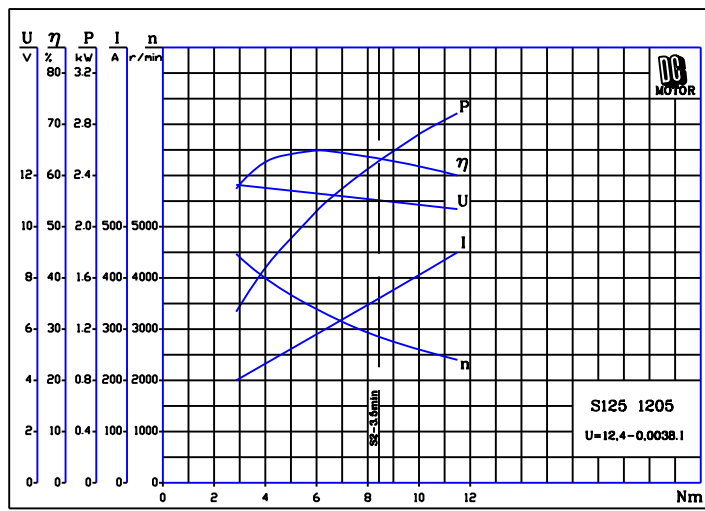


Fig.1

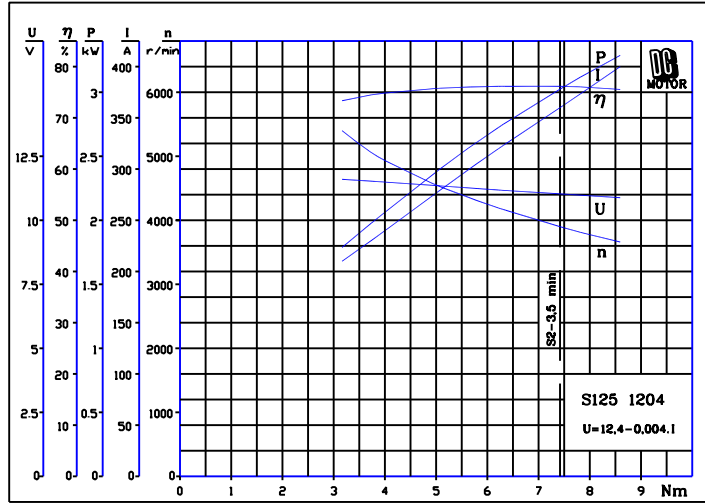


Fig.2

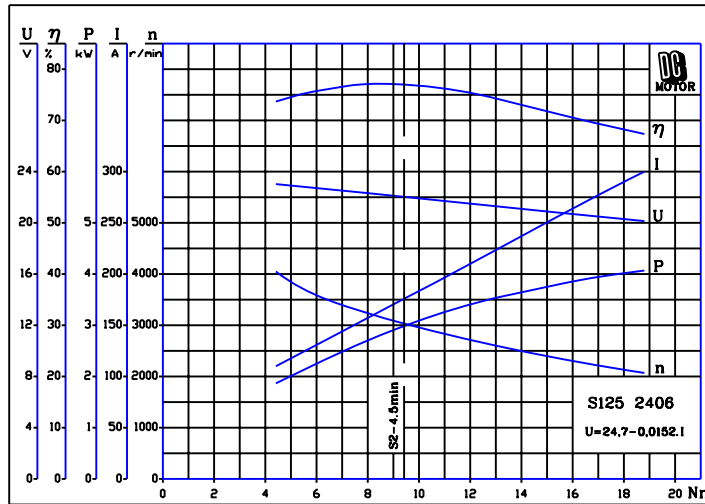


Fig.3

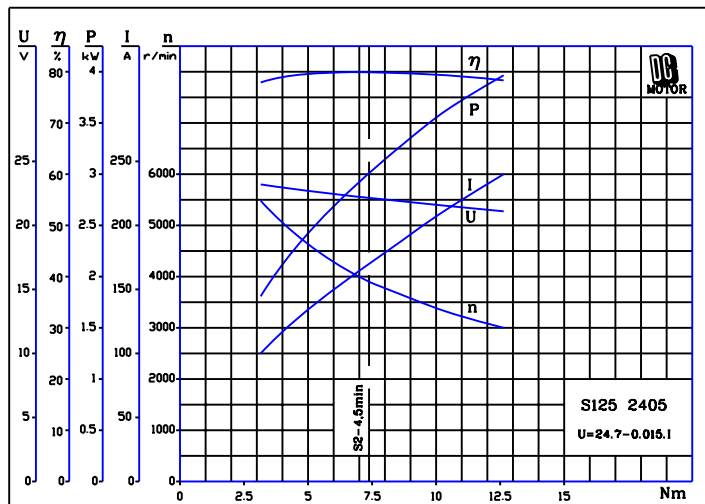
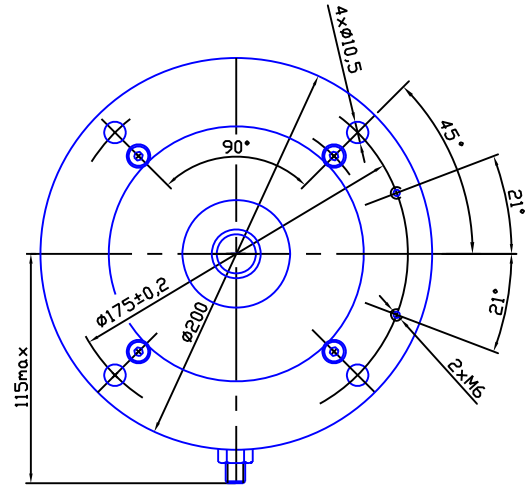
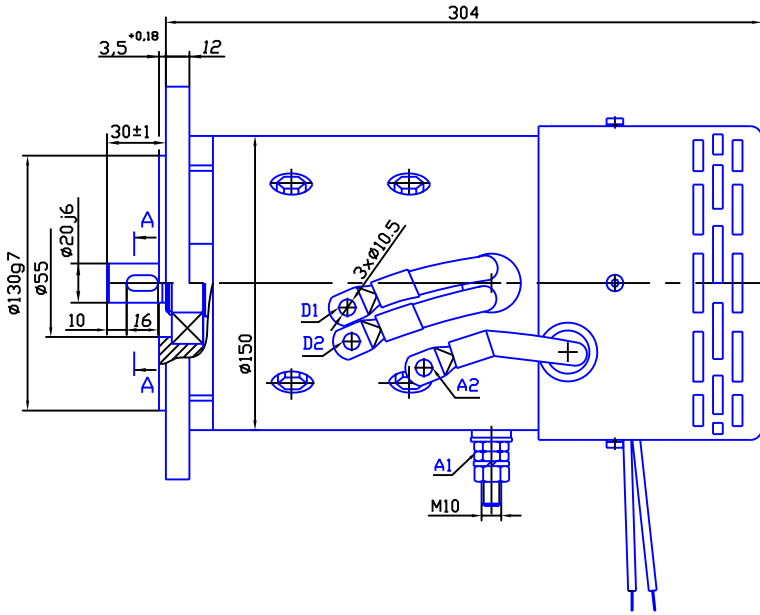
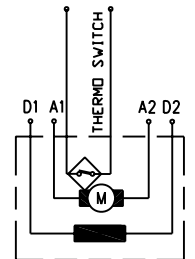
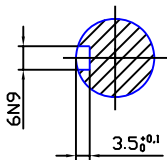


Fig.4



A-A



CODE	V	kW	RPM	Rate	Rot	IP	Curve
------	---	----	-----	------	-----	----	-------

MS150 4,7/36 1200	12	4,7	3600	S2-3min	REV	IP20	fig.1
MS150 6,0/37 1200	12	6,0	3700	S2-3min	REV	IP20	fig.2
MS150 4,7/39 2400	24	4,7	3900	S2-6min	REV	IP20	fig.3
MS150 6,0/37 2400	24	6,0	3700	S2-4.5min	REV	IP20	fig.4
MS150 8,0/34 2400	24	8,0	3400	S2-3min	REV	IP20	fig.5

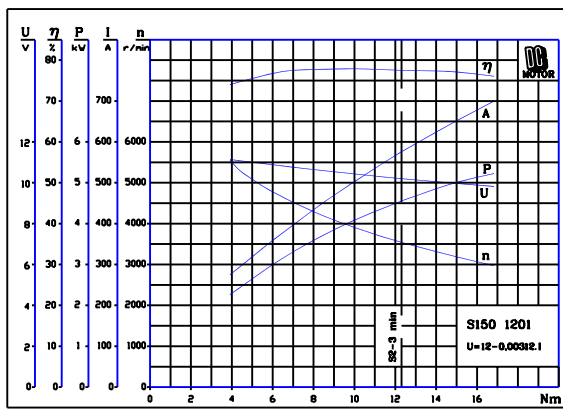


Fig1

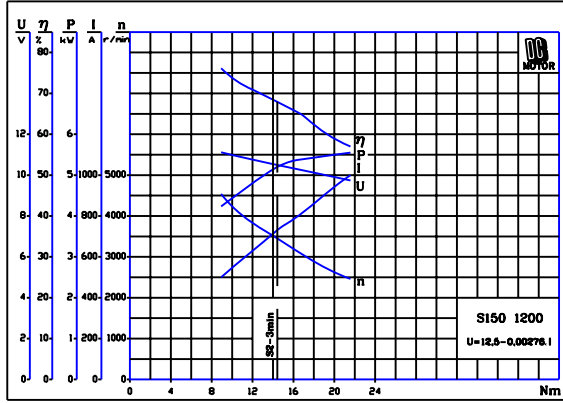


Fig2

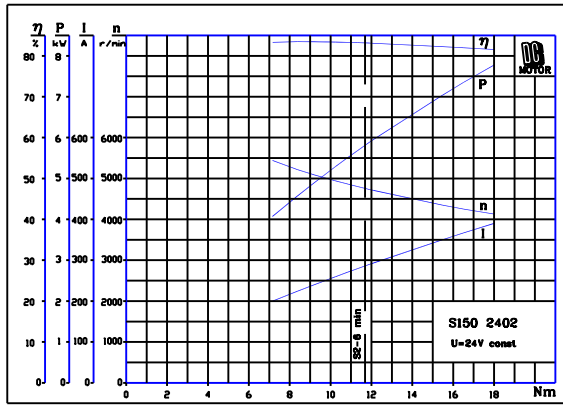


Fig3

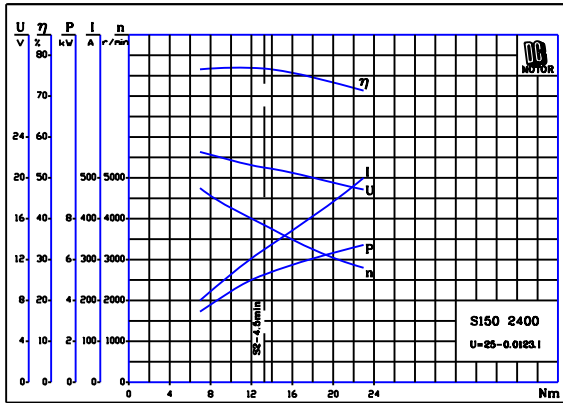


Fig4

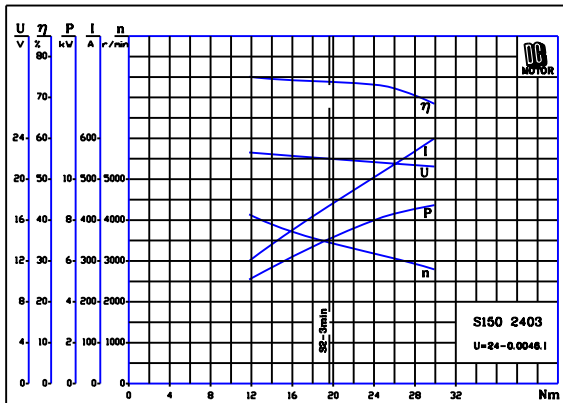
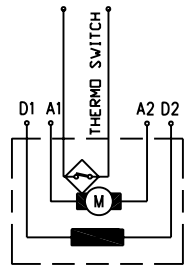
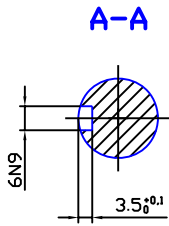
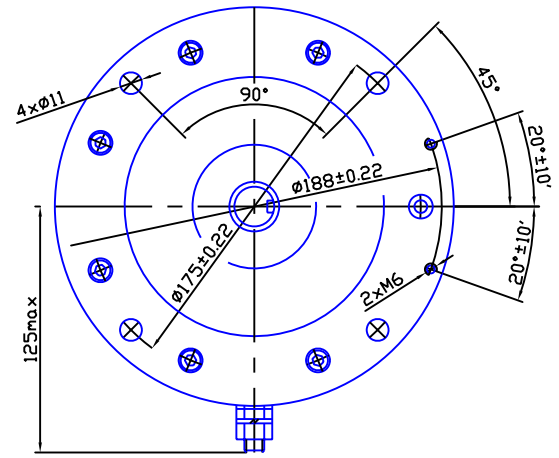
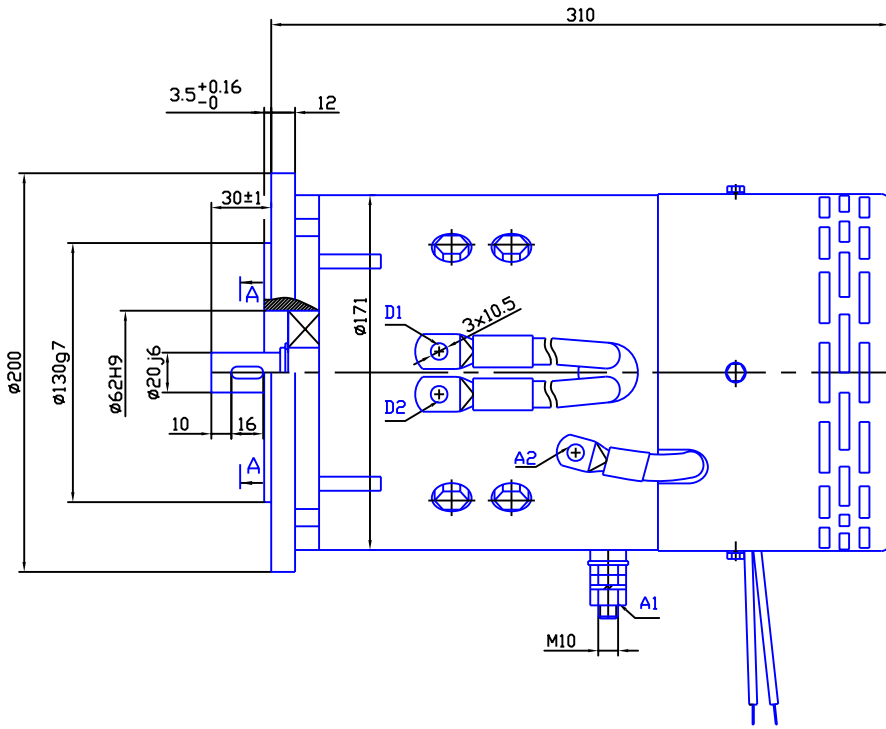


Fig5



CODE	V	kW	RPM	Rate	Rot	IP	Curve
MS171 5,3/23 1200	12	5,3	2300	S2-3min	REV	IP20	fig.1
MS171 5,3/23 2400	24	5,3	2300	S2-5min	REV	IP20	fig.2

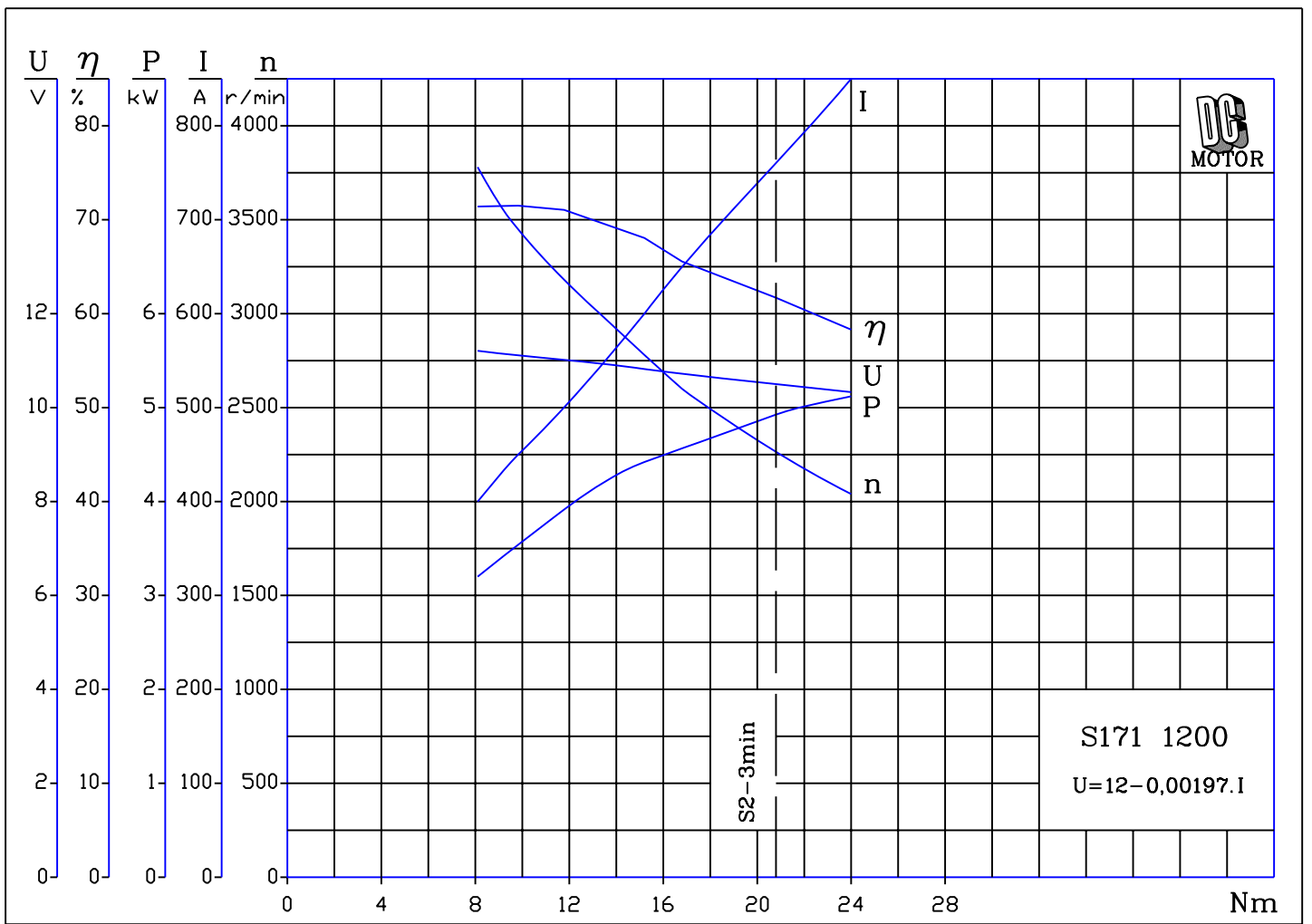


fig.1

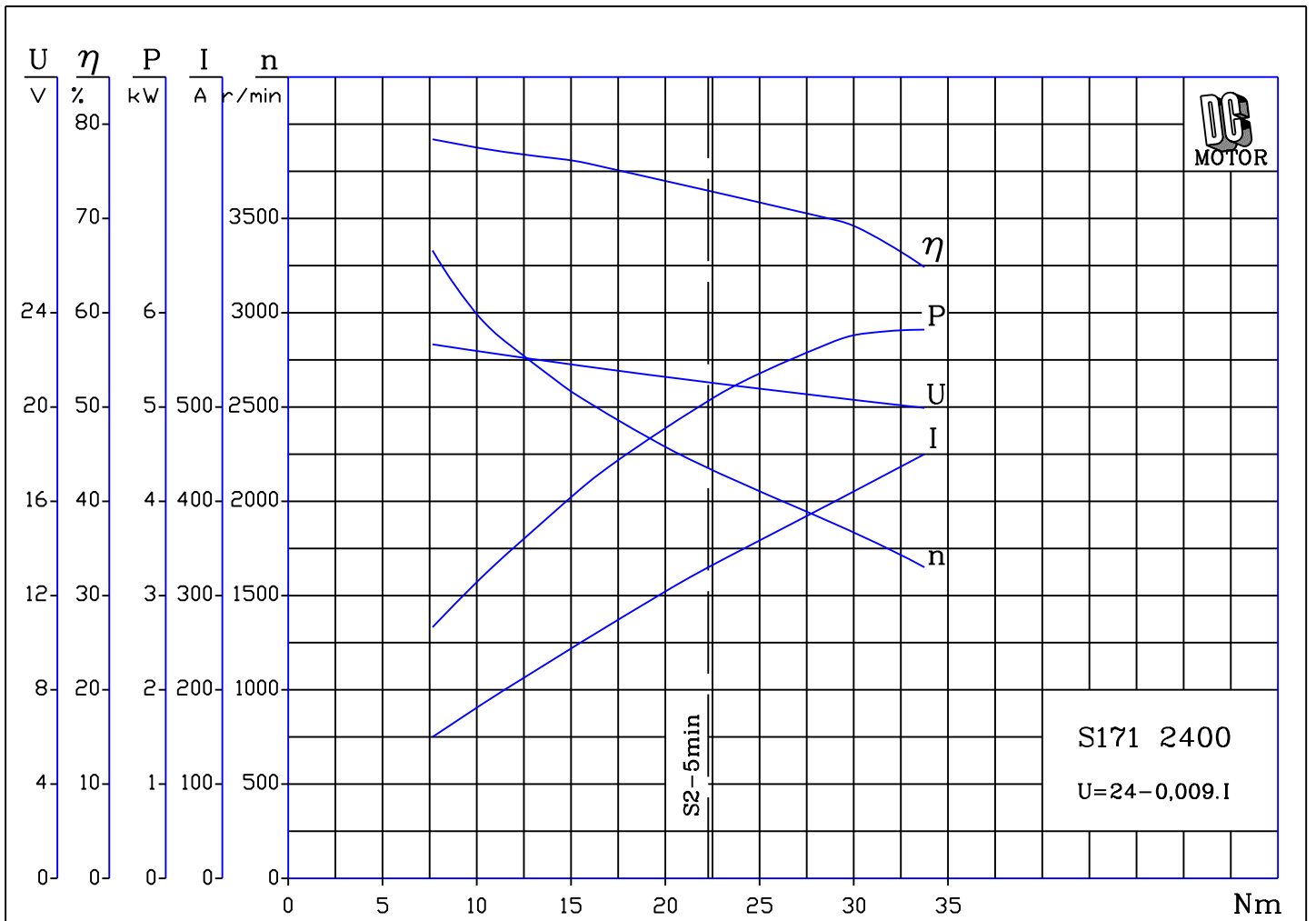
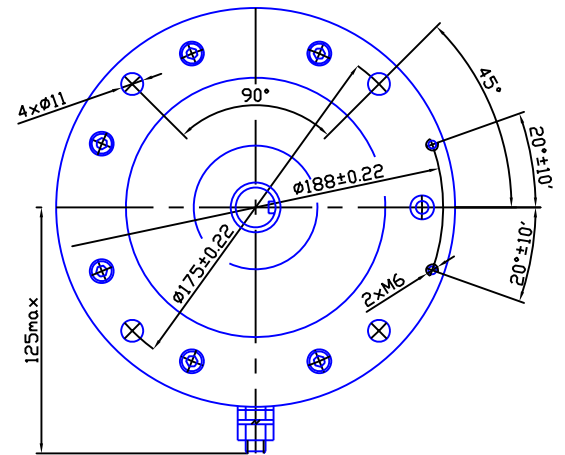
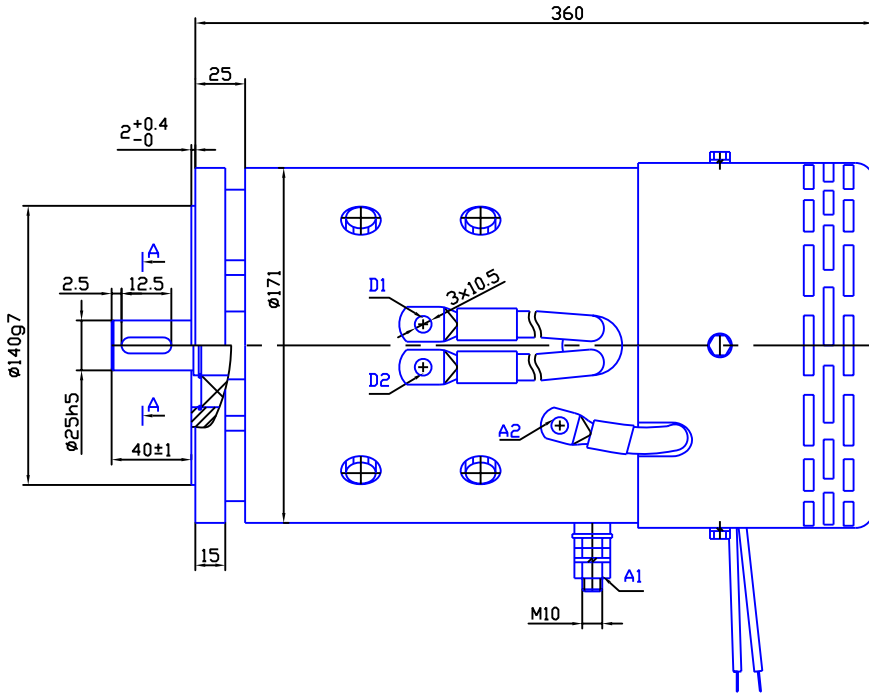
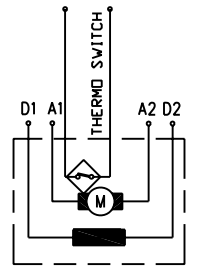
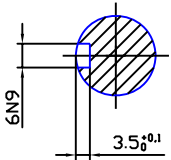


fig.2



A-A



CODE	V	kW	RPM	Rate	Rot	IP	Curve
MS171 8.0/24 2401	24	8,0	2400	S2-3min	REV	IP20	fig.1
MS171 10.0/30 2401	24	10,0	3000	S2-3min	REV	IP20	fig.2

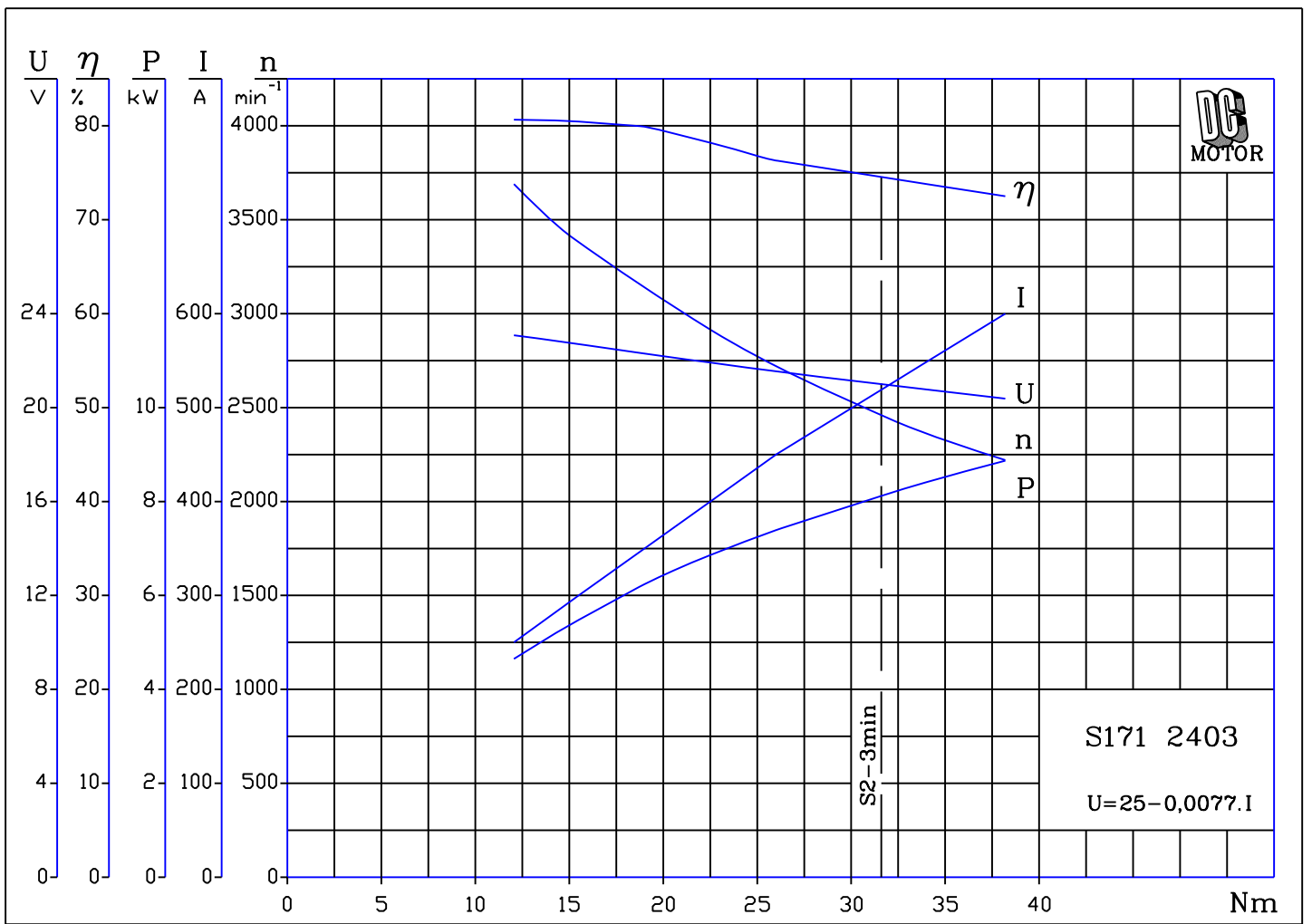


fig.1

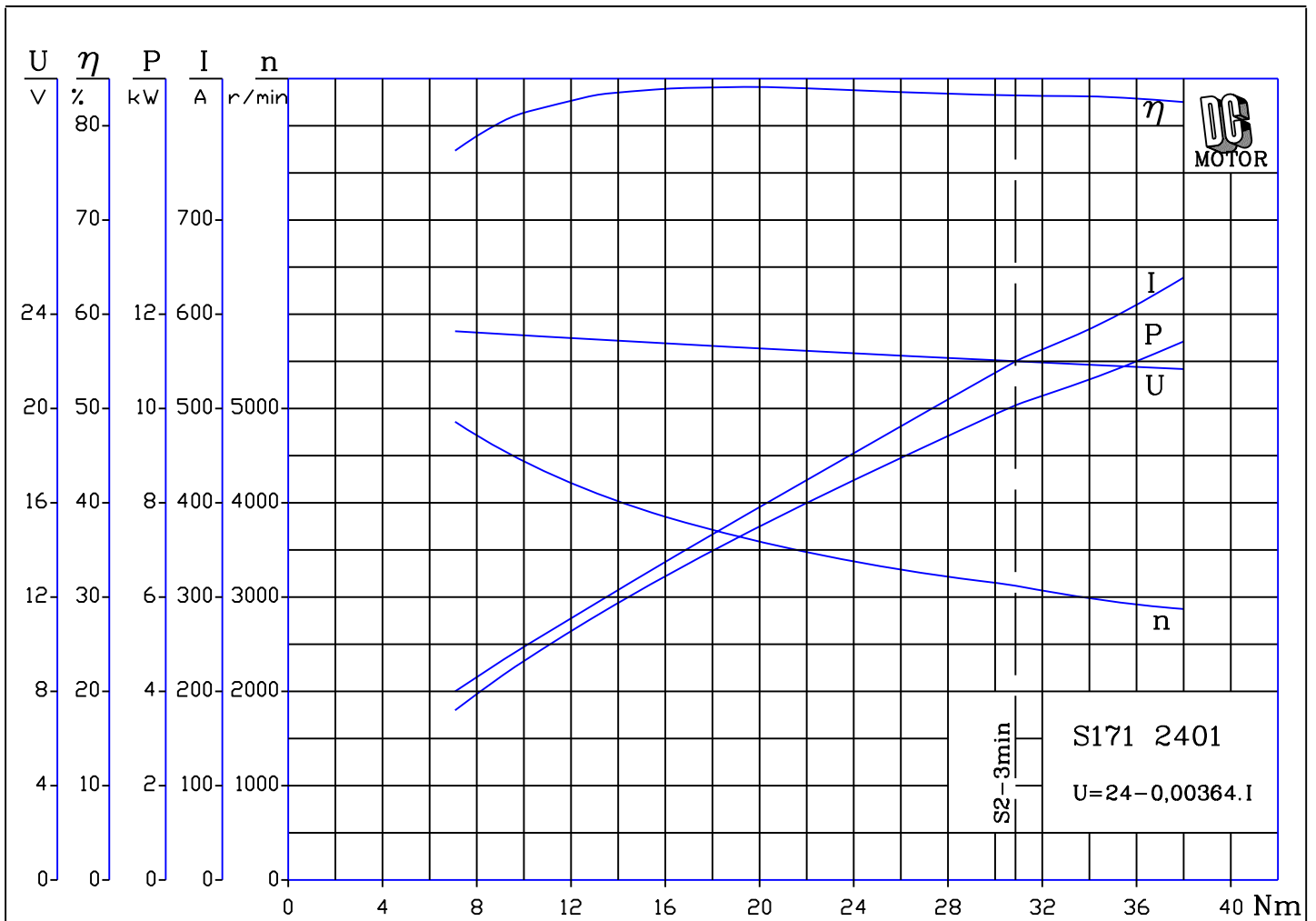
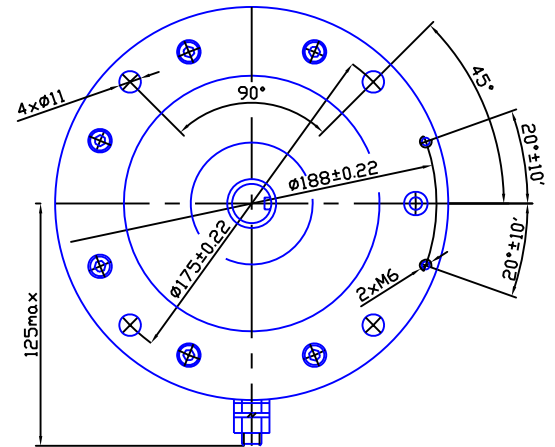
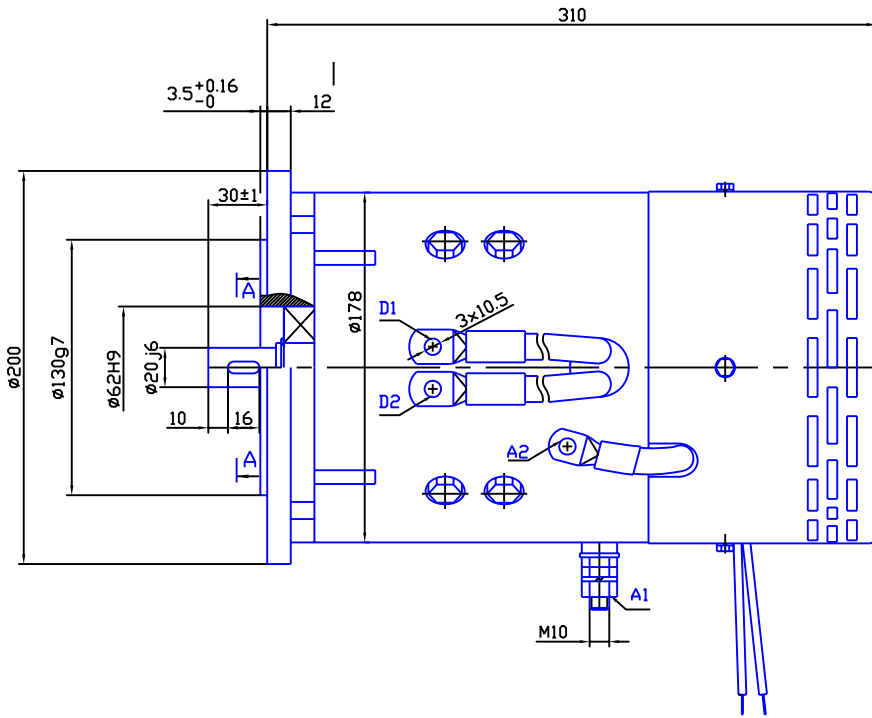
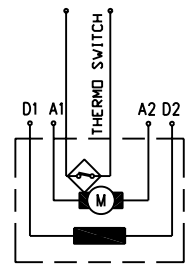
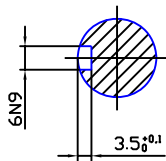


fig.2



A-A



CODE	V	kW	RPM	Rate	Rot	IP	Curve
------	---	----	-----	------	-----	----	-------

MS178 5,3/23 1200	12	5,3	2300	S2-3min	REV	IP20	fig.1
MS178 5,3/23 2400	24	5,3	2300	S2-5min	REV	IP20	fig.2
MS178 7,0/30 2400	24	7,0	3000	S2-4min	REV	IP20	fig.3

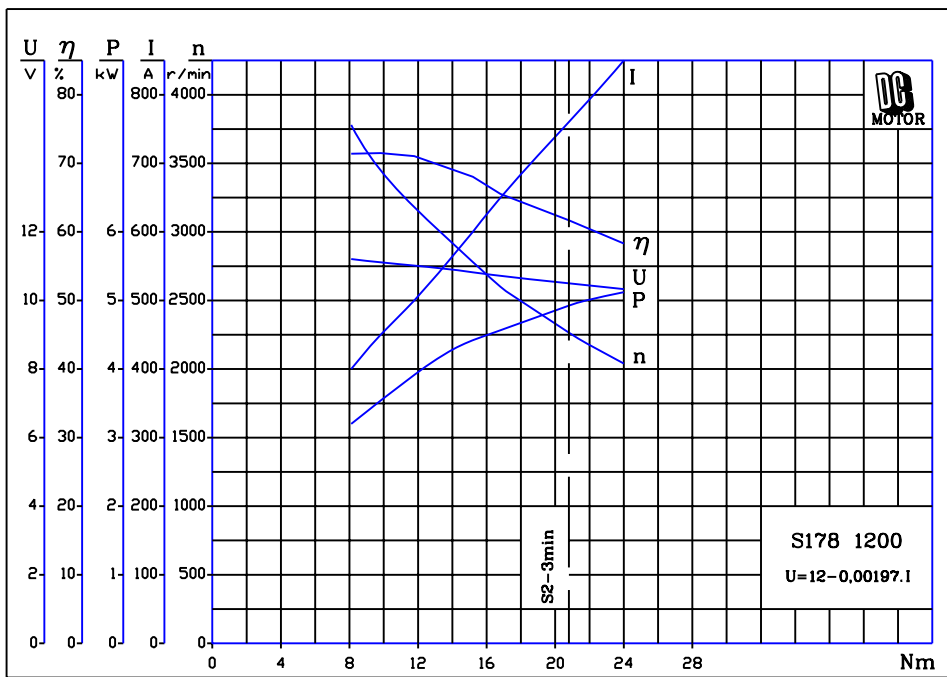


fig.1

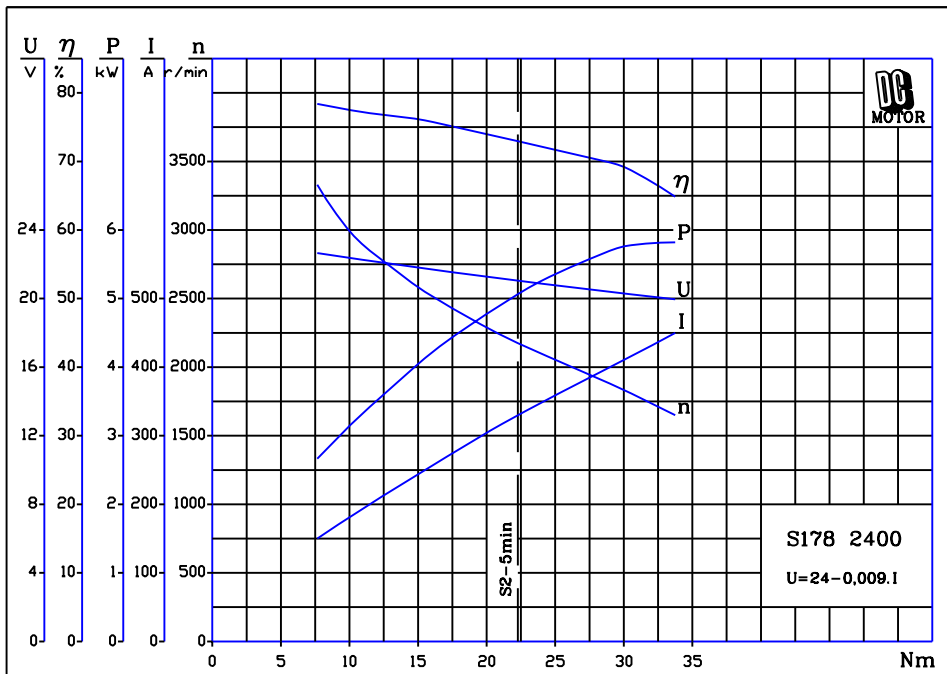


fig.2

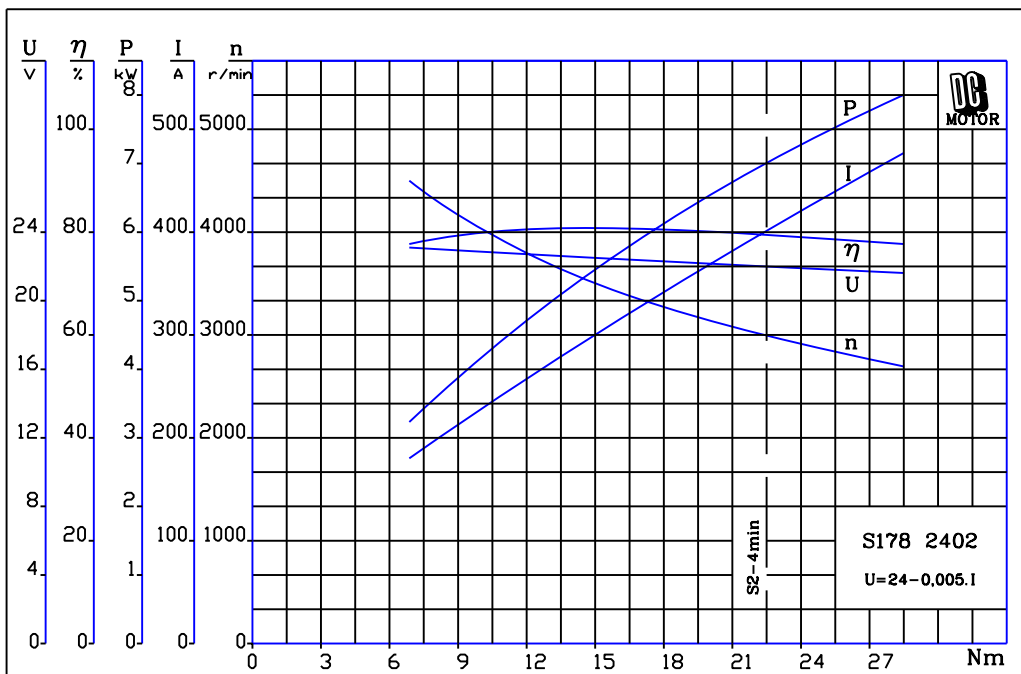
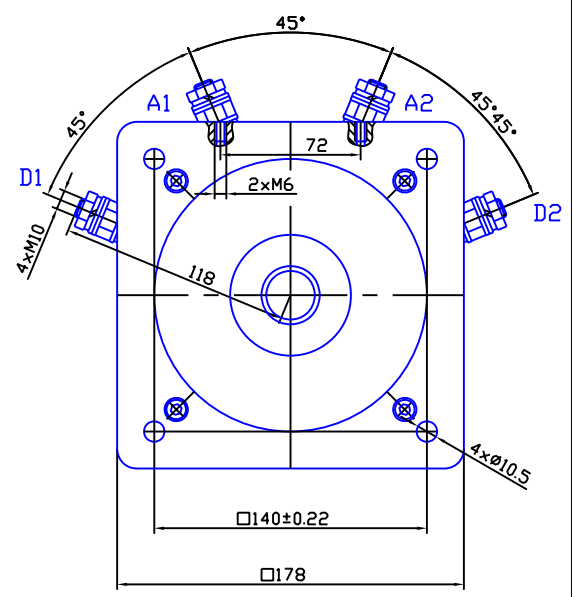
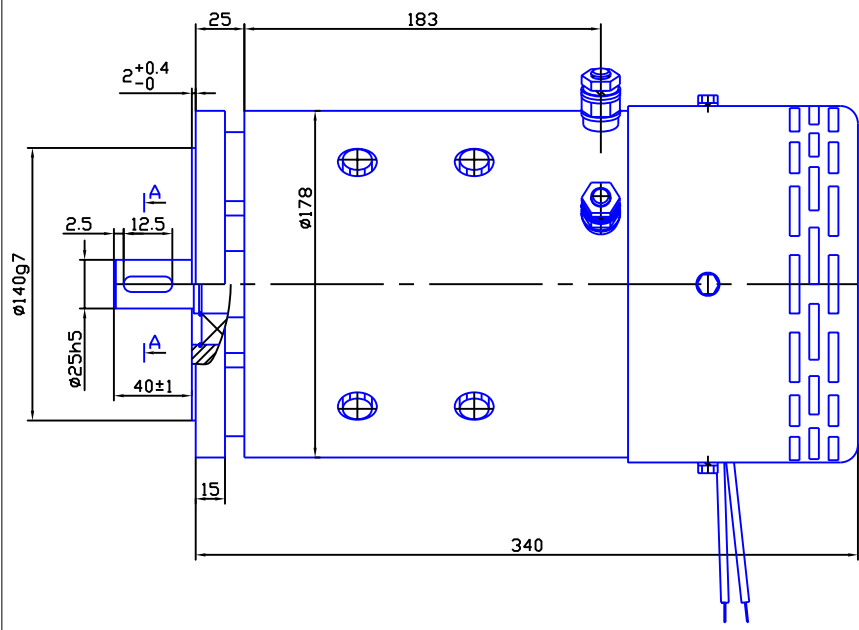
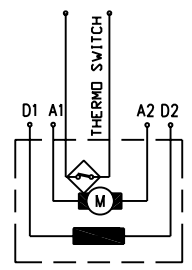
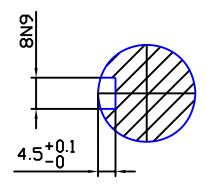


fig.3



A-A



CODE	V	kW	RPM	Rate	Rot	IP	Curve
MS178 10.0/30 2401	24	10,0	3000	S2-4min	REV	IP20	fig.1

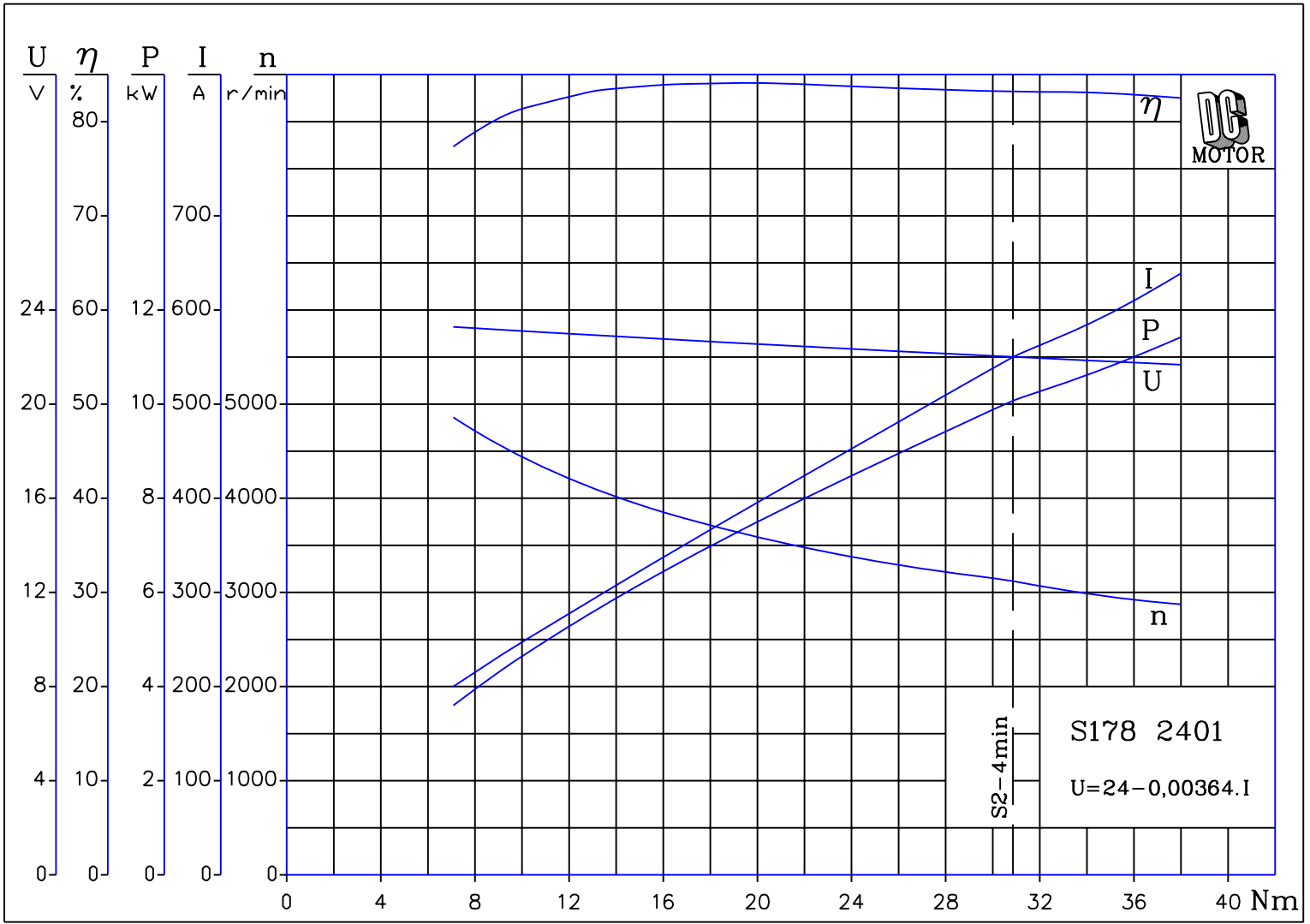


fig.1